



Sasatel Internet

EVDO broadband modem user manual

Contents

INTRODUCTION TO SASATEL INTERNET	2
Safety Precaution	2
STEP BY STEP INSTALLATION PROCEDURE	3
WINDOWS XP/2000/NT VISTA OPERATING SYSTEM PLATFORM	3
1. Installation start	3
2.0. Connecting to Internet	8
3.0. Disconnecting from Internet	9
4. Application	10
5. Phone Call.....	11
6. How to load airtime (top-up) on your modem.....	13

INTRODUCTION TO SASATEL INTERNET

Welcome to Sasatel.

This USB modem allows users to “get connected” to Sasatel EVDO broadband Internet. Powered by a Qualcomm processor, this unit provides high speed data service through USB interface at rates of up to 3.1Mbps download and up to 1.8Mbps upload.

For any enquiries you can call Sasatel customer care on 100 from your Sasatel SIM or from Sasatel USB EVDO Modem and you should be having connected the headphones to your desktop or laptop in order to make calls from your Sasatel EVDO USB Modem.

Safety Precaution

1. Do not shake, hit or drop the unit.
2. To clean the unit, use only a soft, dry cloth. The chemicals in alcohol, benzene or acetone can damage the surface of the unit.
3. Do not unfold the USB connector over 180 degree. Also do not twist or pull the USB connector.
4. Do not connect the unit to your PC if you have water on the USB connector.
5. If you disjoint your unit by yourself, the product warranty ceases.
6. Switch off your modem near the medical equipment. Hospitals or health care facilities may be using equipment that could be sensitive to external RF energy. Follow any regulations or rules in force

The CM (client Manager) tool of CDMA EV-DO_rA Modem (SMU-101A) operates only Windows XP® and Windows VISTA® and the USB driver software of this modem also supports Windows 2000®, Windows NT®, and Mac®.

The ear piece (hands free) must be connected to the Modem for one to make voice calls or listen to the FM Radio.

Always make sure that you modem is **unplugged** when you are starting up your PC.

NB: Read the installation manual carefully before doing any installation.

STEP BY STEP INSTALLATION PROCEDURE

NOTE: Before plugging the modem to the PC (Laptop or Desktop computer) to run the installation ensure that you are logged in as an administrator or that your user account has administrator privileges. This applies to all Windows Operating systems .

Make sure that your modem is **unplugged from your PC** until you are asked to plug it in later in this manual (Chapter 1 Installation Start)

WINDOWS OPERATING SYSTEM INSTALLATION PROCEDURE

1. Installation start

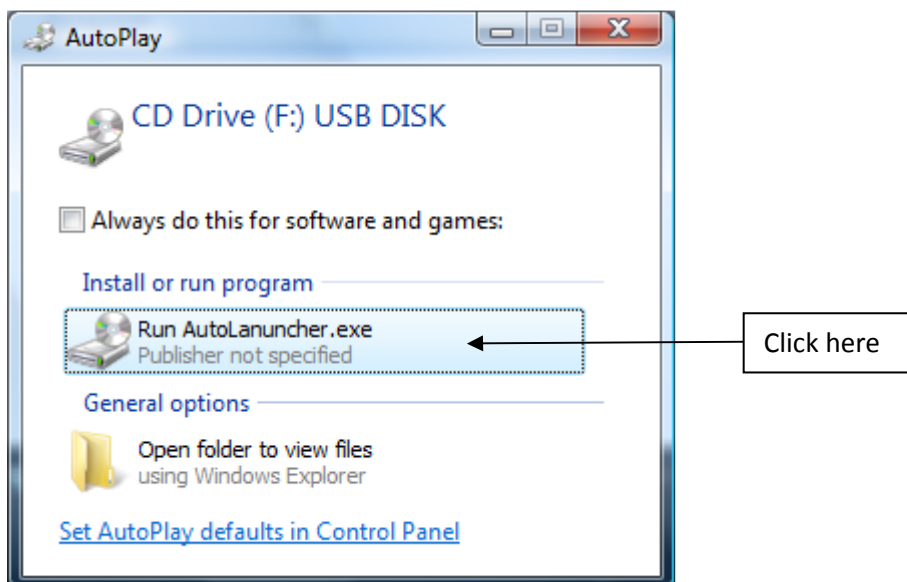
NOTE: Before plugging the EVDO USB modem to the PC (Laptop or Desktop computer) to run the installation ensure that you are logged in as an administrator or that your user account has administrator privileges. This applies to all Windows Operating systems.

Please disable the anti-virus during the installation and enable it after installation is complete.

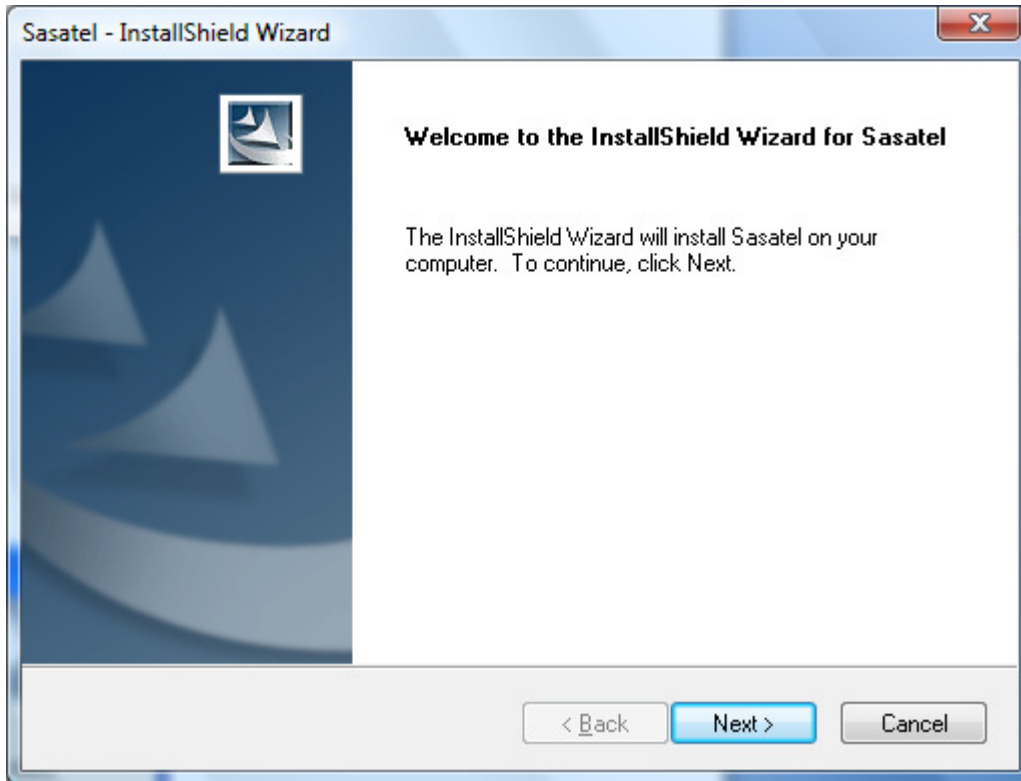
1.1. Installing your modem

1.1.1. Plug in the Sasatel Modem in the USB port on your PC.

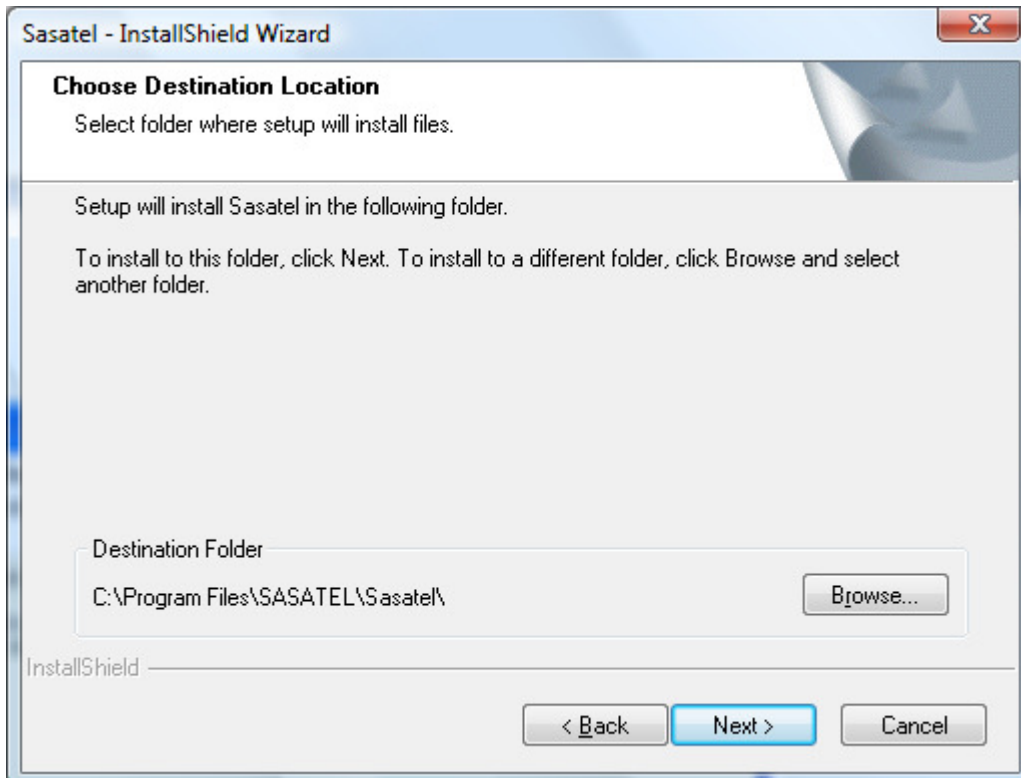
On Windows XP PCs the installation will start automatically, for Windows Vista PC you will get an Auto Launcher Window as below.



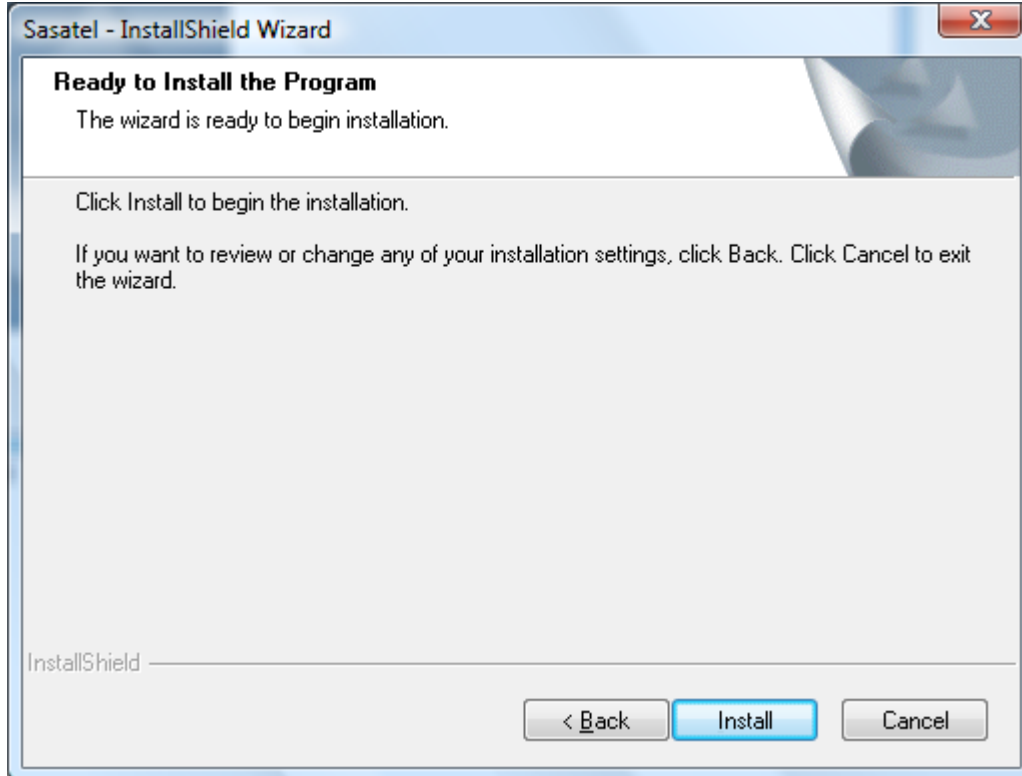
1.1.2. Installation program starting



Click next

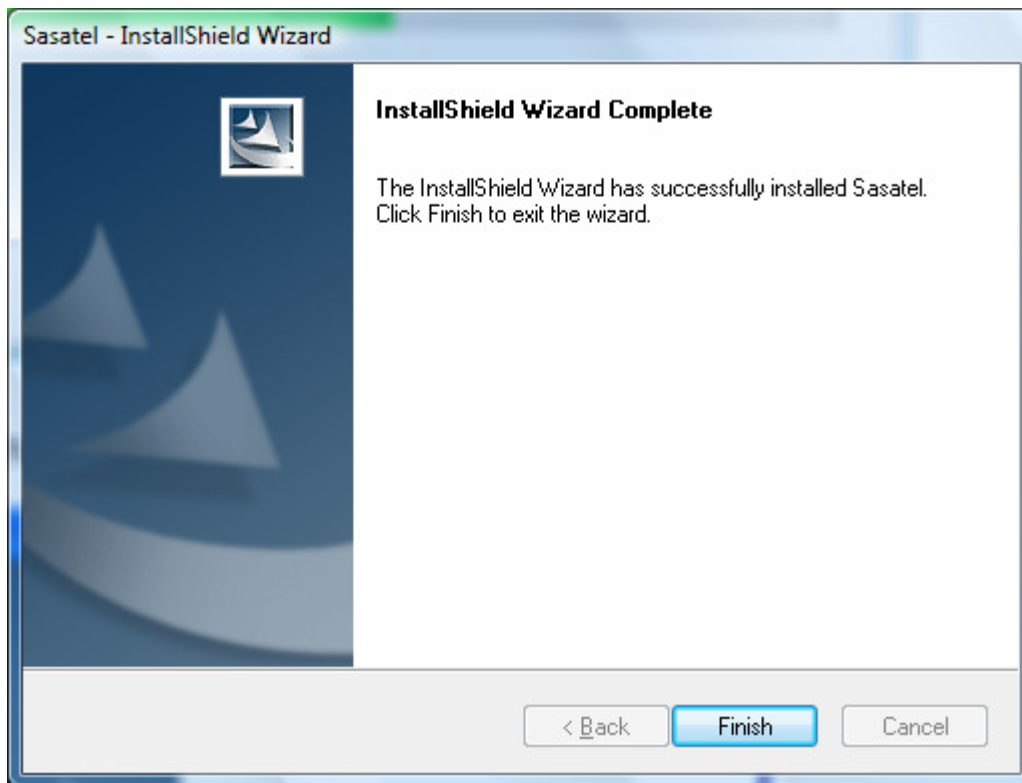
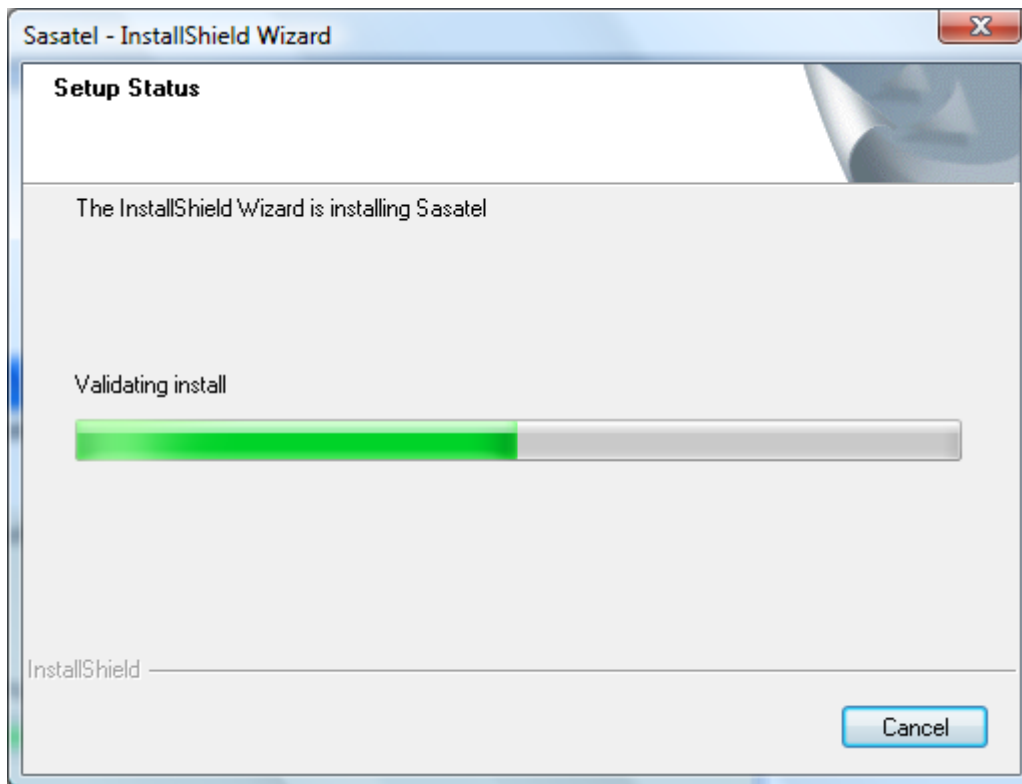


Click **next**



Click **Install**

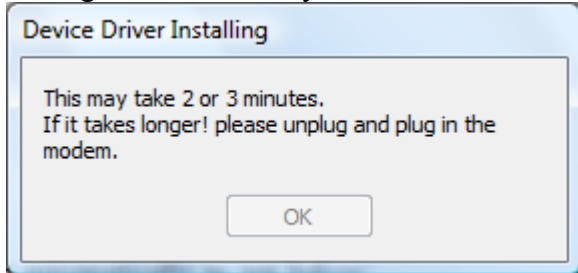
During installation procedure you will see this window.



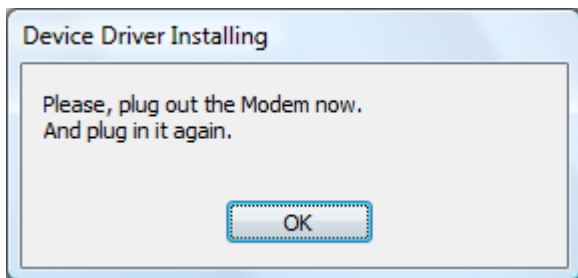
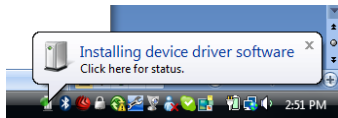
Click **Finish**

The modem will now install the USB device drivers which are needed to operate the modem. This process is working in the background on your PC, and it is very important that you wait for the background installation to finish.

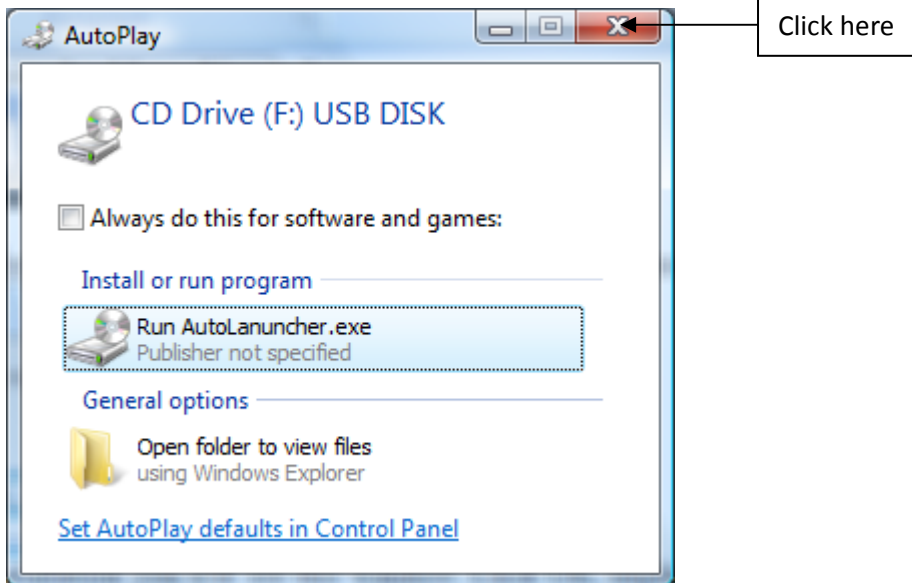
During the installation you should see this window.



NB: Should this step take more than 5 minutes kindly unplug the modem and plug it in again.



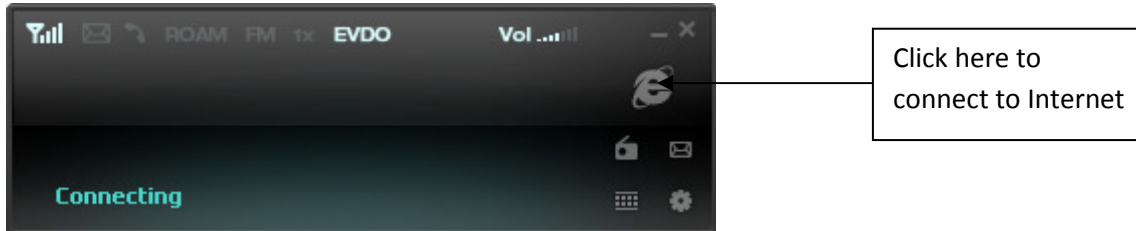
After the background installation you will see this window. Click OK, unplug the modem, wait for 10 seconds and plug the modem in again in the same USB port as before.



The application is now installed on your PC and you are ready to connect to Sasatel Internet. The application will start automatically.

2.0. Connecting to Internet

If you have just finished installing the Sasatel Internet you can connect by clicking on the Sasatel Internet icon.



The next time you start your PC you have to follow this procedure:

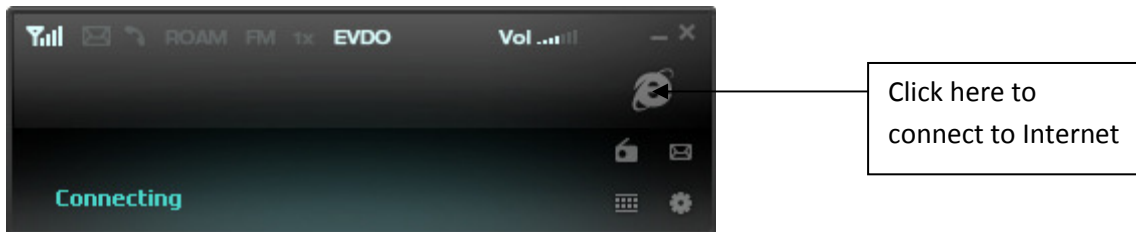
2.1 Plug in your modem

The Sasatel Internet program should automatically start. If not, click on the Sasatel Internet Icon on your desktop to start the program.

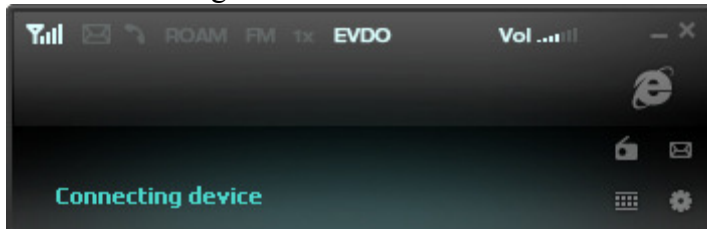


You can also connect by navigating on the Windows Start button on bottom left corner, SASATEL menu, sasatel sub-folder and the Sasatel program. The modem starts to connect as below.

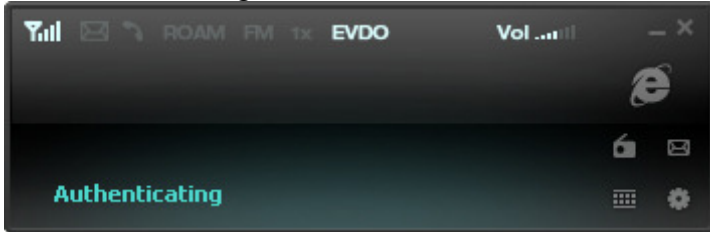
< 1. Start >



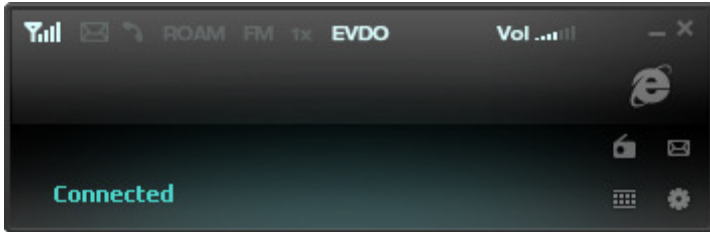
< 2. Connecting the device >



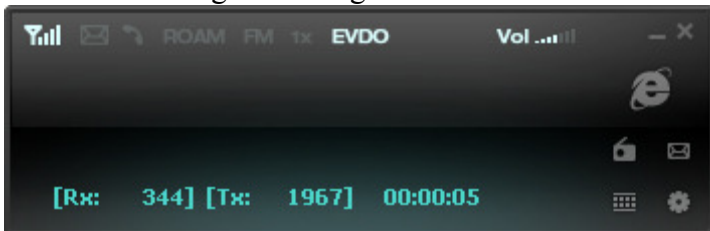
< 3. Authenticating >



< 4. Connected >



< 5. Transmitting/Receiving data >



2.2. The above Icon displays the Quantity of transmitted/received data in bytes and the connection time i.e

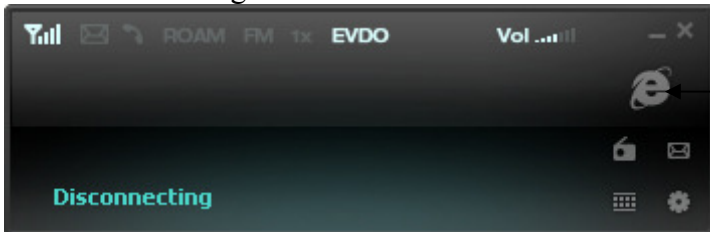
- Rx: Quantity of received data
- Tx: Quantity of transmitted data

3.0. Disconnecting from Internet

3.1. To disconnect from the Sasatel Internet, you must click on the Internet icon (same as when you connect to Internet).

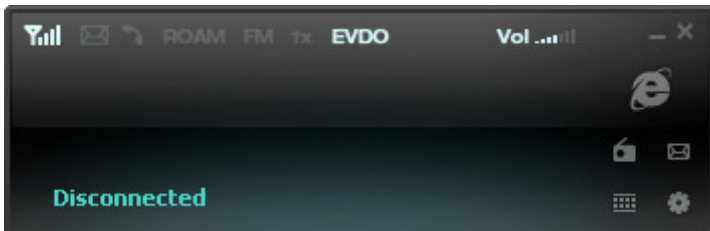
3.2. It disconnects as shown below,

< 1. Disconnecting >

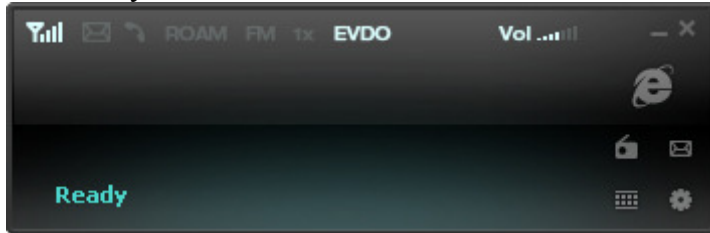


Click here to disconnect to Internet

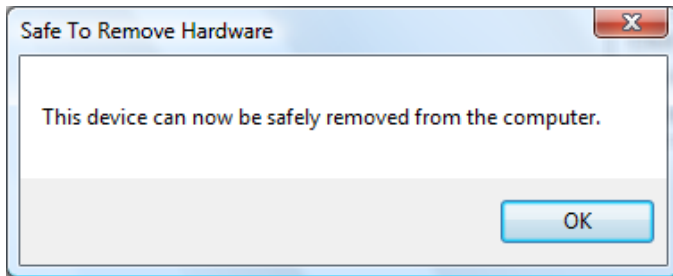
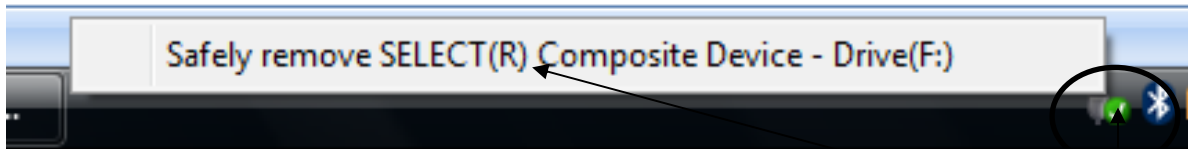
< 2. Disconnected >



< 3. Ready >



Always make sure that you modem is **unplugged** when you are starting up your PC.

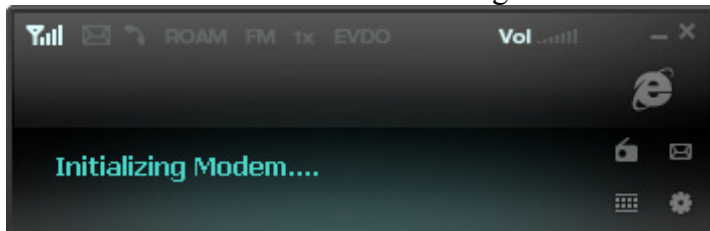


Click on this icon and then click on Safely remove SELECT(R)

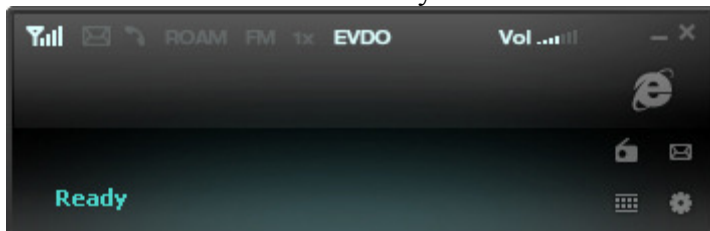
4. Application

4.1. Insert your modem to PC, this application execute automatically. Your modem is now ready to use.

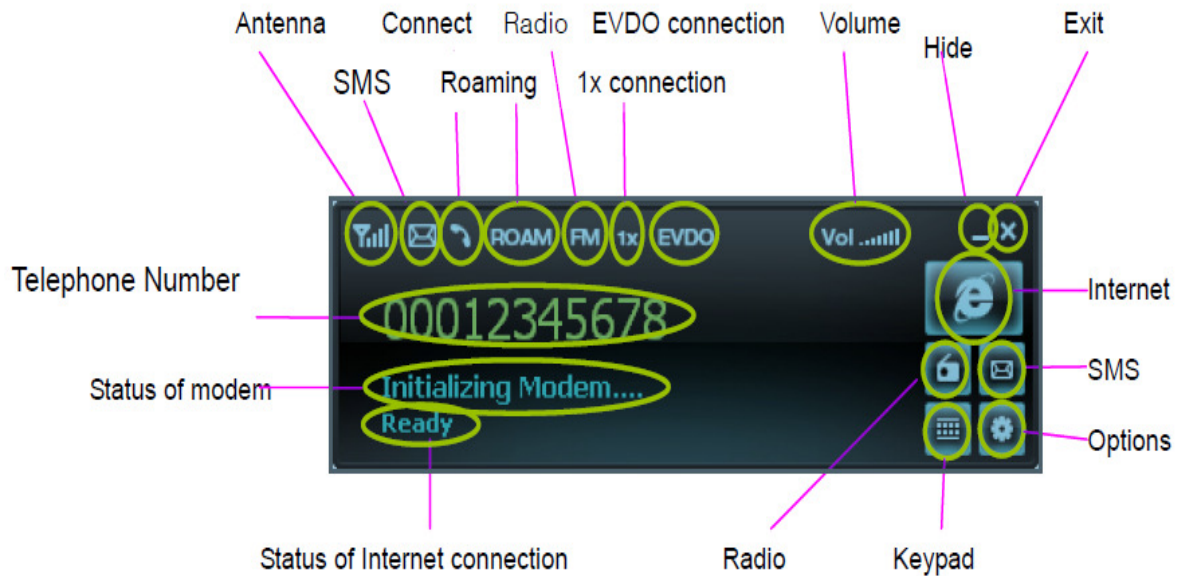
< 1. Initializing >



< 2. Ready state >



Introduction to Icon and buttons for interface



5. Phone Call

5.1. Outgoing Call

5.1.1. In state of Ready, click [Dial pad] icon.

< 1. Display of key button >



5.1.2. It displays Keypad as above and you can input telephone number of outgoing call as follows;

< 1. Display of Telephone number input >



5.1.3. After inputting telephone number, you must click on the “Calling Button” to place a call.

< 1. Calling >

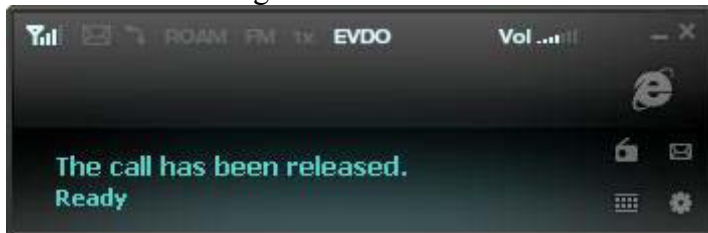


< 2. Connect >



5.1.4. It display as below after one clears the call and hangs up.

< 1. Finished calling >



5.2. Receiving Incoming Call

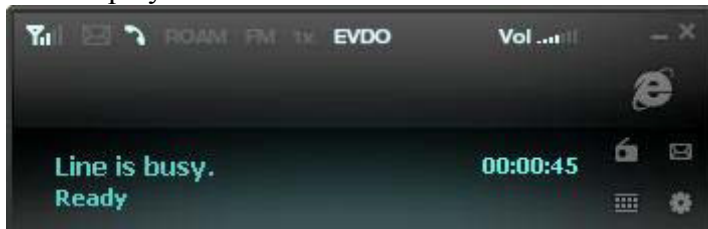
5.2.1. When your modem is receiving incoming call, the modem rings and displays the telephone number of incoming call with simultaneous blinking.

< 1. Display of Incoming Call >



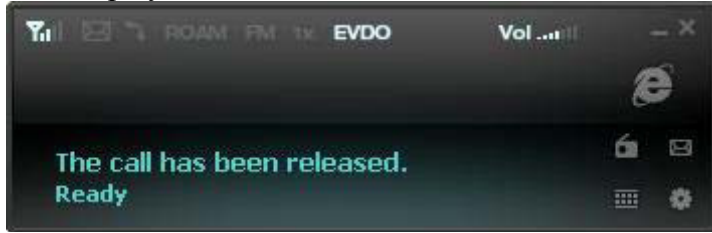
5.2.2. If you click "Calling" button, it connect and display connection time.

<1. Display of connection >



5.2.3. Upon disconnecting the call the interface appears as below.

< 1. Display of disconnection >



6. How to load airtime (top-up) on your modem

6.1.1. In state of Ready, click [Dial pad] icon.

< 1. Display of key button >

Please dial *104* Enter your voucher number and # and then you will receive a sms.



KWA NJIA YA SAUTI: Piga 104 na sikiliza maelekezo.
KUANGALIA SALIO BURE: Piga * 102 #

VOICE RECHARGE: Dial 105 and listen to the voice instructions.
FREE BALANCE ENQUIRY: Dial * 103 #

NAMNA YA KUONGEZA SALIO / HOW TO RECHARGE

Ingiza
Enter *104 * 1234 5678 9000 00 #

Sasa unaweza kutumia huduma za Sasatel !

Expiry Date 22-12-0000 Serial Number 12345678900000

Swahili voice recharge English voice recharge