



P.O.Box 21949 Dar es Salaam
Sasatel House, Plot 251, Toure Drive
Dar es Salaam
Email: Connect@Sasatel.co.tz
Office Phone +255 614 200 200



Dear Sasatel Valued Customer,

Thank you for purchasing your new Acer E-machine notebook model number 350 from Sasatel. It comes with a free modem / Fixed Wireless Phone or Music Phone plus a free internet bundle pre-subscribed. Your internet volume is valid for a period of six months or 180 days but note this volume is exhausted based on usage.

This notebook comes with a one year of warranty period applicable in Tanzania through the Acer Authorized Service Center with contact details below:-

Simply Computers
Ground Floor, Zahra Towers, Corner of Zanaki/ Makunganya Street
PO Box 742, Dar es Salaam.
Telephone: +255 22 2121601/2/3

Sasatel has a customer care and technical support team to offer you support onsite or online via number 0614 100 100

Acer E-Machine Detailed Notebook Specification

CPU: Intel Atom N450
Chipset: Mobile Intel® NM10 Express Chipset
Operating System: Window XP home
Memory: 1GB (expandable to 2GB)
Mass Storage: 160GB HDD SATA
LCD Panel: 10.1" LED backlight
VGA Audio: x2 Built in Stereo Speakers
LAN: 10/100 Mbps Fast Ethernet
Wireless LAN: 802.11b/g
Keyboard: 84-/85-/88-key keyboard1
I/O: VGA Port; USB 2.0 port x 2;
Microphone jack; Headphone jack; RJ-45; Power adapter jack; Built-in card reader (SD/MMC)
Web Cam: 1.3M pixels Webcam with 640 x 480 resolution
Touch Pad: Integrated touchpad, Left key, Right Key
Battery: 3 cell Li-Ion battery pack 2200mAh
Adapter: AC 110~240V, DC 19V Adapter
Physical Characteristics:
Dimension: 251mm*185mm*31mm
Weight: 1.2Kg

All the Acer emachine notebook drivers are available online and is free to download :

Select the product Family: Netbook

Product line as: Netbook

Product: 350

<http://www.emachines.com/support/drivers.html>

The notebook comes with 60 days Microsoft Office Trial and 30 Days Trial of Norton Anti-Virus Suite by default.



Open Office Application Suite come pre-installed, free of charge so you can utilize the open office Word, Excel and PowerPoint programs. Please double click on open office.org icon on the desktop and you will find the attached screen



Note: If you prefer using Microsoft office, a Microsoft Office License can be purchased separately from the Authorized Acer Service Center after 60 days trial.

Terms and Conditions of Warranty of the Acer e-machine notebook:

The warranty covers hardware warranty and not software warranty.

Examples of defect covered by hardware warranty are:

- Hard disk not booting
- Monitor not displaying etc.

Examples of Software defects NOT covered by warranty are:

- Certain customized applications not working. e.g. ERP
- Getting error messages when loading certain applications.
- Loss of Data
- Anti-Virus problems etc.

It is recommended that you contact the Acer Authorized service center for more clarification on whether any notebook problem you experience is covered by the warranty or not.

If your notebook is serviced by any unauthorized service technician apart from Acer Service technician the warranty will become NULL AND VOID.

Damage to the notebook due to negligence or mishandling will automatically make the warranty NULL AND VOID.

Accessories:

For any upgrades or accessories that you may require for your notebook please contact the Authorized Acer Service Center. Example: External Drives, CD-ROM / DVD-Writers, Hardisk, Notebook Bags, Memory and Microsoft Office and Anti-Virus license etc.

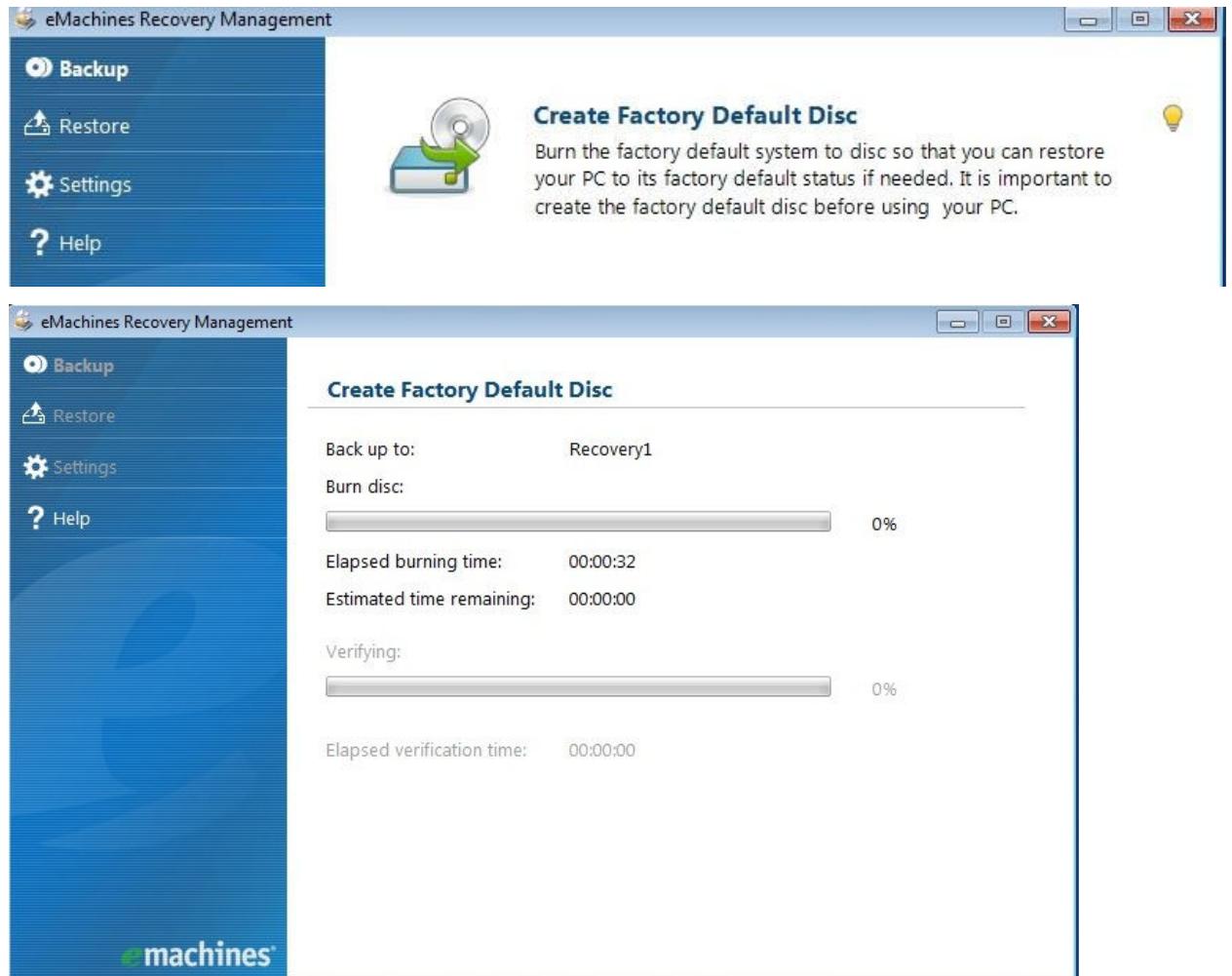
Service:

After expiration of the warranty period, the Acer notebook the Authorized service center will service your notebook at a service charge depending on your notebook problem.

How to make your own Recovery CD?

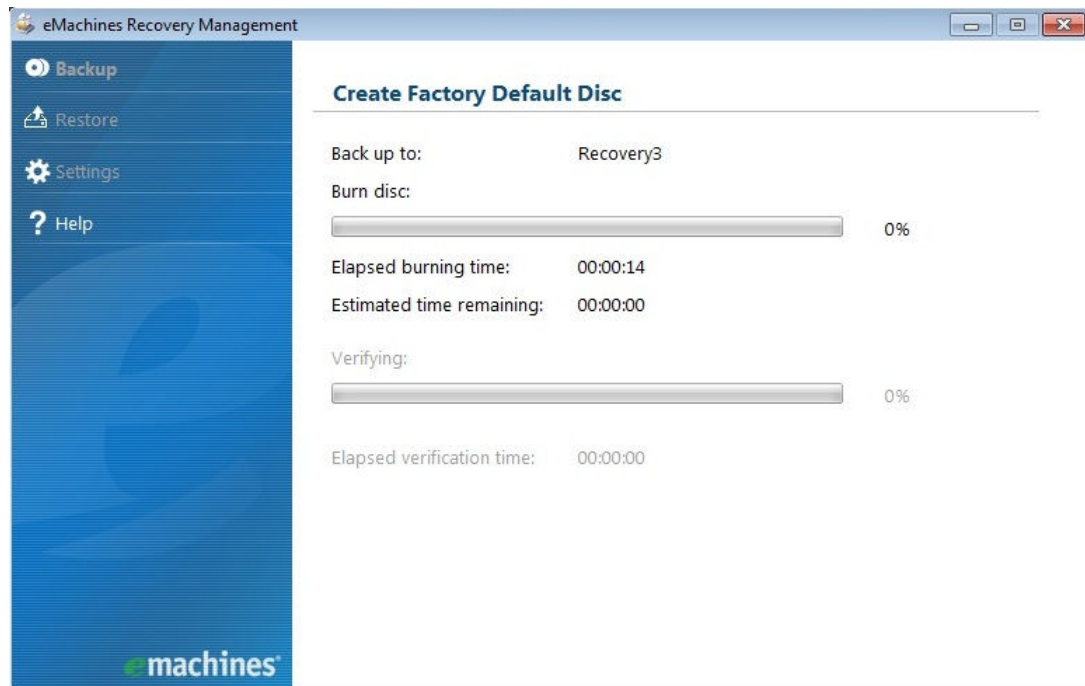
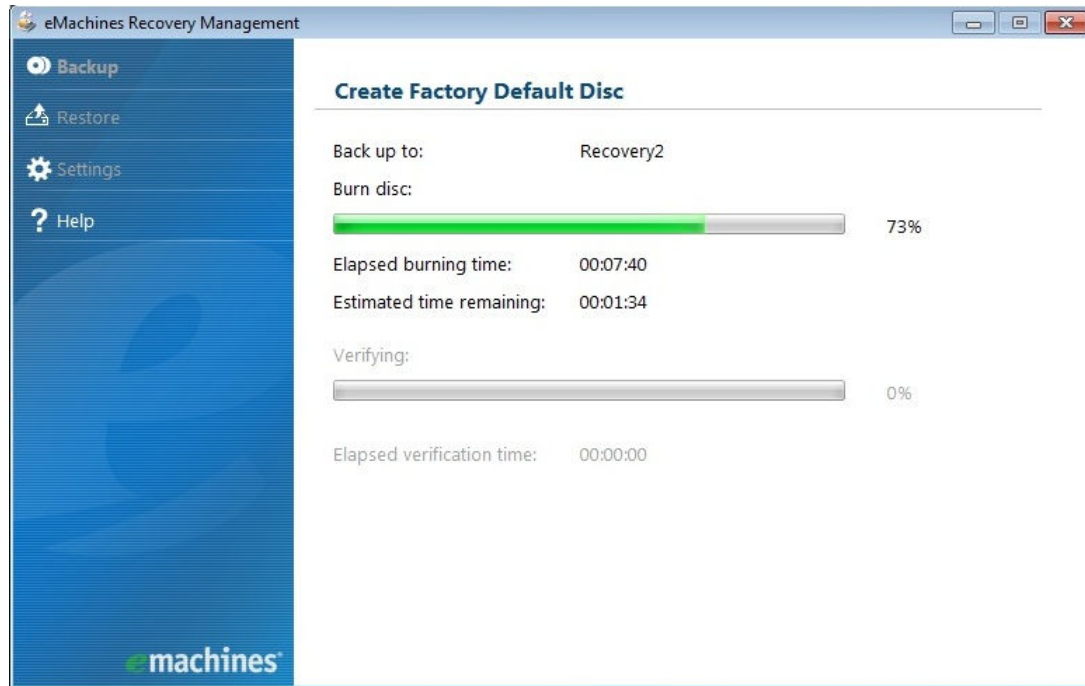
The Installation CD is not been provided by Acer in its new series of notebook. Acer has in built application where a customer is required to burn his own recovery CD for the first time when he has purchased his notebook. It will do a backup of the factory default settings to a DVD. Quick Steps to create your own Recovery CD.

1. Please connect your external CD/DVD ROM driver in any USB Port of your notebook computer.
2. Click Start Menu→All Program Files→emachines folder → emachine recovery management file.
3. Double click on the Create Factory Default Disc and it will ask you for 3pcs of blank DVD where it will copy all the installation files and once copied you can label store for future use.



Recovery CD 1

Recovery CD 2



Recovery CD 3 - Completed message once all the 3pcs of Recovery DVD are copied.

