

CONTENTS

General Introduction.....	1
Important Information.....	2
Introduction.....	4
Additional Functions.....	6
Phone Book.....	8
Recent Calls.....	10
Messages.....	11
Sound Setting.....	14
Display Setting.....	16
Security Setting.....	17
Supp. Service.....	19
Extras.....	20
Data Services.....	21
Send and Receive Fax.....	35
Menu Structure.....	40
General Information.....	43

General Introduction

ACP1607, can support CDMA2000 1X 800MHz network. Its practicality and high integration reduces the cost and makes it easy to come to the market. Congratulations on your purchase of this phone, because it has greatly enhanced voice quality and can provide various advanced features.

This Phone provides the following features:

- Use port for connecting to Internet
- 128x64 LCD display with status indicators
- Whip antenna
- Speaker phone
- AC power supply
- Calls and SMSes can be restricted with password
- Chargeable battery group
- A choice of 10 ring tones
- Last number redial
- Speed dialing with a 99-numbers memory
- Dial tone
- Adjustable ring and voice volume
- Scheduler, stopwatch, and alarm functions
- A big amount of phonebook: 150 columns (can save 3 numbers per column)
- A big amount of SMS: 120 columns (inbox 100 columns, outbox 20 columns)
- Display the incoming call number
- USB data port for data service

Important Information

Warning

To reduce the risk of fire or electric shock,

- Do not expose this product to rain or moisture.
- Do not use this product near swimming pools or other bodies of water.

Important

Read this information before installing or operating this product

Optimal Phone Performance

- Do not operate your product when holding the antenna, or when someone is within four inches (ten centimeters) to the antenna. Holding the antenna affects the call quality and may cause the Phone to operate at a higher power level than needed.
- For the best call quality, keep the antenna free from obstructions and point the antenna straight up.
- Do not use the unit with a damaged antenna. If the antenna is damaged, please have your antenna replaced by a qualified technician immediately. Use only a manufacturer-approved antenna. Non-approved antennas, modifications or attachments could impair call quality and damage the phone.
- RF energy may affect improperly installed or inadequately shielded personal medical devices such as pace markers, hospital monitor. Consult the manufacturer of any personal medical devices to determine if it is adequately shielded from external RF energy. Turn your phone off in health care facilities when any regulations posted in the areas instruct you to do so. Hospitals or health care facilities may be using equipment that could be sensitive to external RF energy.
- If this equipment does cause harmful interference to radio or television reception, which can be determined by turning the equipment off and on, users are encouraged to try to correct the interference by one or more of the following measures:
 - Reorient or relocate the receiving antenna
 - Increase the distance between the radio or television and the Phone.
 - Connect the equipment into an outlet on a circuit different from that to which the phone is connected.
- Use only the battery, antenna and AC power supply provided specially. Using any other type will invalidate the warranty.
- Only authorized personnel should service the phone and its accessories. Faulty installation or service can be dangerous and may invalidate the warranty.
- Do not use the unit in designated "no cellular phone use" area.
- Avoid exposure to high temperature or humidity.
- Avoid wetting the unit with any liquid. If the unit gets wet, turn the power off immediately and remove the backup batteries and AC power supply. If the unit is inoperable, then return to the service agent for service.
- Avoid shock or impact on the unit.
- We recommend you to charge the backup battery fully before initial use. Backup battery may be discharged during delivery.

Care and Service

- Unplug the Phone from the wall outlet and remove antenna (or disconnect antenna cable) before cleaning. Do not use liquid or aerosol cleaners. Use a damp cloth for cleaning.
- If the unit fails for any reason, do not attempt to disassemble; contact the authorized service center for assistance.
- If any of the following conditions exist; unplug the unit from the wall plug, remove battery, and call the authorized service center.

- The power supply cord is damaged or frayed.
- Liquid has been spilled into the unit.
- The unit has been exposed to rain or water.
- The unit has been dropped or damaged.
- The unit does not work normally by following the operating instructions.

Safety Information

- Do not use with car batteries. It may cause an electric shock, fire, breakdown or transformation.
- Avoid exposure to high temperature or humidity. Avoid wetting the unit with any liquid. If the unit gets wet, turn the power off immediately and remove the backup batteries and AC power supply.
- Keep it dry. Precipitation, humidity, and liquid contain minerals that will corrode electronic circuits.
- Do not use or store it in dusty, dirty areas as its parts can be damaged.
- Do not store it in hot areas. High temperature can shorten the life of electronic devices, damage batteries, and warp or melt certain plastic. We need to mention temperatures here, as this is subjective.
- Do not store it in cold areas. When the phone warms up to its normal operating temperature, moisture can be formed inside the phone, which could damage the phone's electronic circuit boards. We need to mention temperature here, as this is subjective.
- Do not attempt to open it. Non-expert handling of the device could damage it. Consult your authorized dealer for help. It may cause fire, electric shock and breakdown.
- Do not drop, knock or shake it. Rough handling can break internal circuit boards.
- Do not use harsh chemicals, cleaning solvents, or strong detergents to clean it. Wipe it with a soft cloth that has been slightly dampened in mild soap water.
- Do not paint it. Paint can clog the device's moving parts and prevent proper operation.
- When lightning, do not touch power plug or phone line, it may cause an electric shock.
- Do not install the unit in places where there is direct sunlight. Also do not put the unit on carpets or cushions. It may cause fire or breakdown.
- Before using plug, check with home power voltage. Inaccurate power voltage may cause fire and damage.
- Do not plug many power cords in outlet. It may cause fire or electric shock.
- Do not remodel or disassemble the power cord. If power cord or plug is impaired, do not use it. It may cause fire or electric shock.
- Do not install in an ill-ventilated place. It may cause fire or electric shock.
- Do not touch the plug with wet hands. When disconnecting the power cord from any accessory, grasp and pull the plug, not the cord. Or else, that may cause fire or electric shock.
- Do not put heavy things on the power cord. Do not bend power cord too much. It may cause fire or electric shock.
- Do not peel off battery. Do not be short-circuit. You may get hurt or it may start fire by generation of heat or explosion.
- Do not throw and impact battery. Do not dispose of batteries by putting them in fire. It may explode.
- When you disconnect the power cord of any accessory, grasp and pull the plug, not the cord. Otherwise it may cause the adapter to breakdown.
- A minimum separation of 20 cm must be maintained between the antenna and all persons.







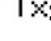

Introduction

Front view of the Phone



LCD Display

The LCD shows icons on the top of the LCD screen. Different icons appear based on the phone's operating mode.

- : Indicates the signal strength in the service area.
- : Displayed when waking up alarm time is set.
- : Indicates charged battery level.
- : Indicates charger in used, not battery
- : In use.
- : Displayed when a text message is received.
- : Indicates no network in the area.
- : Indicates the roaming service.

Installation

You should follow each step carefully in order to guarantee proper operation of CDMA Fixed Wireless Phone.

STEP1. Check Components

- Fixed Wireless Phone is supplied with the following standard unit and accessories:
 1. Main Unit with Handset
 2. Whip Antenna
 3. User Manual
 4. Chargeable Battery
 5. AC/DC Power Adapter
- Please make sure that these components are present before you begin the unit

installation. And then compare the following figures and components. If components are missing or damaged, contact the store where you purchased the unit immediately.

STEP2. Place the Phone

- Place the phone on the stable flat secure surface area (desk, table, etc.). Serious damage may result if the unit falls. Do not place the unit on, or within 1 meter of heaters or radiators. This unit is designed for desktop usage. Avoid direct exposure to sunlight and damp area.
- Read the SAFETY INFORMATION located at the first part of this document before you place the phone.

STEP3. Connect Components (See the figures in “Installation Steps”.)

- Connect antenna to the antenna connector located at the top of the phone. If you have placed the phone on the flat surface, bend the antenna up right.
- Connect curl cord of handset to the RJ-11 port located at the left of the phone.
- Open the battery case and install the batteries, then close the case.
- Connect the AC/DC Adapter cable to the DC port located at the right of the phone.
- Please follow steps below to get better voice quality:
 1. Keep the phone away from electrical appliances such as TV, computer, radio and so on.
 2. Keep the phone in a high and central location with no obstructions, such as metal walls.
 3. Raise the integral antenna of phone to get maximum strength of received signal as shown in the figure in the next page.

STEP4 Check the LCD Display

- After you follow the installation instruction **STEP3**, please check the LCD for normal operation
- If you do not see the status of service, please repeat the instruction of **STEP3**. And confirm Fixed Wireless Phone to get the proper signal strength from service operator system.

The adapter type (with power cord) may be different according to different countries.

Additional Functions

Making a call

The phone offers a variety of ways to make a call, including making a call using the keypad, dialing from phonebook or speed dialing.

- **Making a call using the keypad**

1. Pick up the handset or press “**hands free**” button.
2. Listen for dial tone.
3. Enter the phone number with area code if needed.
4. Wait for the auto time-out or press “**Call**” button.
5. The call is connected and you can start conversation.
6. To disconnect the call, replace the handset or press “**hands free**” button.

Notice: If you don't pick up the handset or press hand-free button before you make a call, the default is press hand-free

- **Making a call from phonebook**

1. Pick up the handset or press “**hands free**” button.
2. Listen for dial tone.
3. Press “**Menu**” button to enter Phone Book menu or enter the Phone Book menu by press [**Menu**]->[**Phone Book**], and then select [**Find**].
4. Now find by name. Input the first letter, or total letters of the name you are looking for and press [**Find**], then a list of records beginning with those letters are displayed.
You can select the corresponding input method by press [**Multitap**]. There are four different input methods as Multitap, Numbers, English and Symbols.
Or you can choose to view by **Group**.
Or you can just view all records list and scroll through to find the record you want.
5. Enter the record to see details. Select a phone number and press “**Call**” to dial it. If one record has more than one phone numbers stored and you dial it directly, the first number is selected and dialed out.
6. To disconnect the call, replace the handset or press “hands free” button.

Notice: If you don't pick up the handset or press hand-free button before you make a call, the default is that you have pressed hand-free button..

- To enter English character.
Select [**Multitap**], and press a keypad once to enter the first letter labeled in the keypad, twice to enter the second letter and 3 times to enter the third letter.
e.g. enter “c”,
Press dial button 2 labeled “ABC” 3 times to enter “c”,
After 2 seconds entering a character, the cursor is moved to the next position automatically.
Press “**Left/Right**” button to move the cursor.
Press “**Clear**” button to erase or correct entered character
- To enter number character.
Select [**Numbers**], and press the corresponding number button to enter the number.
- To enter specific character.
Select [**Symbols**], and press the corresponding number button to enter the specific character. There are 30 symbols corresponding to the number, and you can press “**Up/Down**” button to change the characters represented by 1-9 number buttons.
- To enter space
Select [**Number**] or [**English**], and press button “#” to enter space.
- Switch between Capital and Small letter

Select **[Multitap]** or **[English]**, and press button “*” switch between Capital and Small letter.

- **Make a call with a speed dial**

Refer to Speed Dial List in menu **[Phone Book]** -> **[Speed Dial List]** for more details.

If you input one less than 2 digits (including 2) number and press “Call”, then the entry stored in this location is selected and dialed out.

Emergency Call

Even if phone is in no service state, it is possible to call Emergency number.

1. Pick up the handset or press “**hands free**” button.
2. Enter the Emergency number.
3. Looking for Emergency Service.
4. The call is connected and you can start conversation.
5. To disconnect the call, replace the handset or press “**hands free**” button.

Redialing Last Outgoing Number

1. Pick up the handset or press “**hands free**” button.
2. Listen for dial tone.
3. Press “**RDL**” button. The last number that you called will be re-dialed.

- **Correcting dialing mistakes**

1. Press “**Clear**” button shortly to erase the most recent digit.
2. Press and hold “**Clear**” button for at least one second to erase all the entered digits.

- If the phone is locked, enter the lock Code.

- If the call does not go through, press the hook switch and dial again.

- **Flashing/Hook Switch**

1. While in the middle of a call, pressing the hook switch for less than 1 second will be treated as a flash. After 1 second, the call will be terminated.
2. Very briefly pressing the hook switch will be ignored.

Answering a Call

1. When the bell rings, pick up the handset or press “**hands free**” button.
2. Start conversation.
3. To disconnect the call, replace the handset or press “**hands free**” again.

Signal Strength

The quality of calls depends on the signal strength in your area. The stronger of the signal, the better of the call quality is. The signal strength icon indicates the current strength as a number of bars. You can see bars according to the strength of received signal in the upper-left part of the LCD.

Missed Call Message

If a call is received and not answered, you are informed that you have missed a call. The latest missed call is displayed on LCD, you can press **[OK]** to read the details of this missed call or press **[Back]** to ignore “Missed call” message.

Phone Book

Find

View All

You can view all of the Phone Book.

1. Press **[MENU]**.
2. Press **[Phone Book] -> [Find]->[View All]** to enter the all Phone Book menu.
3. Press **“Up/Down”** button to select the corresponding name.
4. Enter this name to check the number and there are two options, which are Options and the number.
5. You can enter to the Options to add new, edit name, classify contact and erase the contact, or enter to the number to send SMS, edit it, erase it, add it to speed dial.
6. Press **[Save]** to save and exit.

Find by name

You can find a phone number by name in the Phone Book

1. Press **[MENU]**.
2. Press **[Phone Book] -> [Find] ->[Name]**to enter the find menu.
3. Input the name that you want to look for and press **[Find]**.
4. Enter the corresponding name; there are two options, which are Options and the number.
5. You can enter to the Options to add new, edit the name, classify contact and erase the contact, or enter to the number to send SMS, edit it, erase it, add it to speed dial.
6. Press **[Save]** to save and exit.

View by R-UIM

You can find the phone number on R-UIM card

1. Press **[MENU]**.
2. Press **[Phone Book] -> [Find] ->[R-UIM]** to enter the find menu.
3. Press the letter key to go to corresponding word whose name contact the letter.
4. You can enter the Options, edit the name and erase the contact.

View by Group

You can find the phone number by groups.

1. Press **[MENU]**.
2. Press **[Phone Book] -> [Find]->[View by Group]-> [Personal] or [Business]** to enter the different groups.
3. Press **“Up/Down”** button to select the corresponding name.
4. Enter to this name to check the number and there are two options, which are Options and the number
5. You can enter to the Options to add new, edit the name, classify contact and erase the contact, or enter to the number to send SMS,, edit it, erase it, add it to speed dial.
6. Press **[Save]** to save and exit.

Add

Add to New

You can add a new number to the Phone Book.

1. Press **[MENU]**.
- Press **[Phone Book] -> [Add] -> [Add to New]** to enter the add new menu.
2. Press **“Up/Down”** button to select the contents types that you want to add which include Mobile Phone, Home phone, Business Phone, Email, Address and Web Page.
 3. Input the materials, when inputting a phone number, you can save the extension number following “P”. Press **[Next]** and input the name, and then press **[Save]** to save.
 4. You can enter to the Options to add new, edit the name, classify contact and erase

the contact, or enter to the number to set the number type, edit it, erase it, add it to speed dial.

5. Press **[Save]** to save and exit.

Add to R-UIM

You can add a new number to the R-UIM card.

1. Press **[MENU]**.
2. Press **[Phone Book] -> [Add] -> [Add to R-UIM]** to enter the add new menu.
3. Input the mobil phone number, when inputting a phone number, you can save the extension number following "P" using the **[Pause]** with the direction keys. Press **[Next]** and input the name, and then press **[Save]** to save.
4. You can enter the Options, edit the name and erase the contact.
5. Press **[Save]** to save and exit.

Speed Dial List

You can check the speed dial list.

1. Press **[MENU]**.
2. Press **[Phone Book] -> [Speed Dial List]** to enter the different groups.
3. Press **"Up/Down"** button to select the corresponding number.
4. You can enter one item to erase this contact.

My Number

You can check and set Own phone number.

1. Press **[MENU]**.
2. Press **[Phone Book] -> [My Number]** to enter own number menu.

Duplicate All

You can duplicate the Phone Book.

1. Press **[MENU]**.
2. Press **[Phone Book] -> [Duplicate All]**, you can select duplicate Phone to R-UIM or R-UIM to Phone.

Erase All

You can erase the Phone Book.

1. Press **[MENU]**.
2. Press **[Phone Book] -> [Erase All]**, you can select erase all in Phone, erase in R-UIM or All Speed Dial.

Memory states

You can check memory state of Phone Book.

1. Press **[MENU]**.
2. Press **[Phone Book] -> [Memory States]** to enter memory state menu.

Recent Calls

Recent Calls

There are three items including missed calls, incoming calls and outgoing calls. The operations under every item are similar.

1. Press **[MENU]**.
2. Press **[Recent Calls]->[Missed calls] or [Incoming Calls] or [Outgoing Calls]** to enter the different items.
3. Press “**Up/Down**” button to select the corresponding name.
4. Enter to this name, and you can view the information including call number, time, and Duration.
5. Press the left/right key to do the following operation with the number:
 - **Delete:** If you want to delete this entry, press **[Delete]**, and select **[Yes]** to delete this entry.
 - **Send SMS:** If you want to send SMS message to this number, press **[Send SMS]**, and edit the message text, then you can select send or save this message by corresponding operation.
 - **Save Number:** If you want to save the note to the phonebook. You can choose **[Add to New] or [Add to Exist]**. If you want to save this number, press **[Add to New]**. If you want to delete this entry, press **[Add to existing]**.

Calls Info

There are four timers in the menu, which are Last Call Time, Total Outgoing Time, Total Incoming Time and Total Time.

1. Press **[MENU]**.
2. Press **[Recent Calls]->[Call Info]->[Last Call Time],[Total Outgoing Time],[Total Incoming Time] and [Total Time]** to enter the corresponding menus.
3. Press “**Left/Right**” button to select the settings. Press **[Reset]** to set the timer to zero.
4. Press **[OK]** to save and exit.

Clear Call History

There are four notes in the menu, including Missed Calls, Incoming Calls, Outgoing Calls and All. The operations under every item are similar.

1. Press **[MENU]**.
2. Press **[Recent Calls]->[Missed calls], [Incoming Calls], [Outgoing Calls] or [All]** to enter the different items.
3. Press “**Up/Down**” button to select the corresponding name.
4. Press **[OK]** to delete all entries.

Messages

SMS is available when your phone is turned on. Using Message button allows you to access messages for viewing on the LCD screen or to send a message. While viewing a message, you can call back to the number displayed in the message by picking up handset or press “hands free” button.

WLL service provider: Sasatel supports it.

Voice Mail

If somebody gives you voice message. You can receive cue and then view the message in the voice mail center.

Received or outgoing Messages

You can check, forward, edit and erase the received or outgoing messages.

1. Press **[Messages]**.
2. Press “**Up/Down**” to select **[InBox]**, **[OutBox]**.
3. Press “**Up/Down**” to select the message you want to check. And also there are some other operations in every Box.
 - In **[InBox]**, there are 7 operations including Next, Erase, Forward, Reply, Call, Save Number, Save to. You can press **[Next]** to check the following messages one by one. You can press **[Erase]** to erase this message. You can press **[Forward]** to forward this message. You can press **[Reply]** to reply this message. You can press **[Call]** to call the number. Press **[Save Number]** to save the new number. Press **[Save to]** to save the message to other box.
 - In **[OutBox]**, there are 4 operations including Erase, Send, Forward and Edit. You can press **[Erase]** to erase this message. You can press **[Send]** to send this message again. You can press **[Forward]** to forward this message. You can press **[Edit]** to edit the message.
 - When you send or forward the existing messages, you can edit it with any input method you want.

Send a new message

You can send a new message.

1. Press **[Messages]**.
2. Press “**Up/Down**” to select **[Create Messages]**.
3. Input the phone number you want to send or select it from the Phone Book. Select **[Next]** to enter the next number, you can send to 10 numbers at most. You also can use the number from Phone Book, select the **[contact]**, then select the number, then press **[clear]**, the number could be entry.
4. Press **[Continue]** to enter the message edit box, and then input the content you want to send and press **[Continue]**. You can select any input method you want.
5. There are two options as Send and Save, you can select to send this message to outbox by press **[Send]**.

Preformatted Messages

You can use the preformatted messages.

1. Press **[Messages]**.
2. Press “**Up/Down**” to select **[Preformatted Message]**.
3. Use “**Up/Down**” to select the preformatted message that you want. The following process is as same as Create Message.

Draftbox

You can save the messages to the draftbox.

1. Press **[Messages]**.
2. Press “**Up/Down**” to select **[Draftbox]**.
3. Select to view the message in the draftbox, there are 4 operations including Erase, Send, Forward and Edit.

RUIM Status

You can view the messages in the RUIM.

1. Press **[Messages]->[RUIM Status]** to view the messages on the RUIM card.
2. Press “**Up/Down**” button to select the message.

There are 7 operations including Next, Erase, Forward, Reply, Call, Save Number, Save to. You can press **[Next]** to check the following messages one by one. You can press **[Erase]** to erase this message. You can press **[Forward]** to forward this message. You can press **[Reply]** to reply this message. You can press **[Call]** to call the number. Press **[Save Number]** to save the new number. Press **[Save to]** to save the message to other box.

Erase message

You can erase messages by the following modes.

1. Press **[Messages]->[Erase Messages]** to enter the erase menu.
2. Press “**Up/Down**” button to select the erase modes.

There are 5 erase modes including **[Entire InBox]**, **[Entire OutBox]**, **[Entire Draft]**, **[Entire RUIM]**, **[Old Messages]** and **[Entire mutisend report]**. You can enter Entire Inbox and press **[Yes]** to erase the entire inbox messages. Other box erase method is as same as Entire InBox. And if you don't want to erase, please select **[No]**.

Message Settings

You can set some features of the messages.

Voicemail Number

You can set or edit voice mail number.

1. Press **[Messages]->[Message Settings]->[Voicemail Number]** to enter the setting menu.
2. Press “**Left/ Right**” to select go back or edit voice mail number.

Message Alert

You can select different message alert modes.

1. Press **[Messages]->[Message Settings]->[Message Alert]** to enter the setting menu.
2. Press “**Up/Down**” to select the alert mode you want.
There are three modes including None, Alert Once and Alert &Remind.
3. None means no alert when a new message is incoming; Alert Once means only alert once when a new message is incoming. Alert &Remind means alert and remind when a new message is incoming.

Set Memory

You can select to set the memory.

1. Press **[Messages]->[Message Settings]->[Set Memory]** to enter the setting menu.
2. You can select to save to **[Phone]** or **[R-UIM]**.

Delivery report

You can set delivery report, when others have received our message, we can receive a message about delivery report.

1. Press **[Messages]->[Message Settings]->[Delivery report]** to enter the setting menu.
2. Press “**Up/Down**” to select **[Enable]** or **[Disable]** to enable or disable this function.

Call Back Num

You can set call back number.

1. Press **[Messages]->[Message Settings]->[Call Back Num]** to enter the setting menu.
2. Press “**Up/Down**” to select **[Callback NO. set]** to enable or disable this function, when you start the function, select **[Callback NO.edit]** to edit the number .

Memory status

Select **[Memory Status]**and press “**select**” key to enter.

The current message quantities and remaining capacity of Inbox, Outbox and draftbox are listed. Scroll with **Up/Down** keys.

Multisend report

Let you view the report of last multisend.

Sound Setting

This menu allows you to adjust the various different volumes.

Volume

Ringer

The ringer volume when a call is incoming can be adjusted.

1. Press **[MENU]**.
2. Press **[Sound Setting]->[Volume]->[Ringer]** to enter the Ringer volume adjusting menu.
3. Press **“Up/Down”** button to adjust ringer volume.
4. Press **“SELECT”**.

SMS

1. Press **[MENU]**.
2. Press **[Sound Setting]->[Volume]->[SMS]** to enter the SMS volume adjusting menu.
3. Press **“Up/Down”** button to adjust SMS volume.
4. Press **“SELECT”**.

Voice Volume

The voice volume of the other part can be adjusted.

1. Press **[MENU]**.
2. Press **[Sound Setting]->[Volume]->[Voice Volume]** to enter the Voice Volume adjusting menu
3. Press **“Up/Down”** button to adjust voice volume.
4. Press **“SELECT”**.
5. When you hold up the handset, you can adjust the voice volume of handset and when in idle or hand-free state, you can adjust the voice volume of the speaker.

Key Beep

The Key Beep volume when you press a key can be adjusted.

1. Press **[MENU]**.
2. Press **[Sound Setting]->[Volume]->[Key Beep]** to enter the Key volume adjusting menu
3. Press **“Up/Down”** button to adjust key beep volume.
4. Press **“SELECT”**.

MIC Volume

You can adjust the microphone volume.

1. Press **[MENU]**.
2. Press **[Sound Setting]->[Volume]->[MIC Volume]** to enter the microphone volume adjusting menu
3. Press **“Up/Down”** button to adjust microphone volume.
4. Press **“SELECT”**.
5. When you hold up the handset, you can adjust the microphone volume of handset and when idle or pressing “hands free” button, you can adjust the microphone volume of the speaker.

Notes: The adjusted microphone volume can only become effective next time.

Ringer Select

You can select the various ringer types for the Incoming call or SMS.

1. Press **[MENU]**.
2. Press **[Sound Setting]->[Ringer Select]** to set the Ringer type of Incoming call or SMS.
3. Press **“Up/Down”** button to select ringer.
4. Press **“SELECT”** to save and exit.

Alert

Missed Call

You can enable or disable the missed call alert.

1. Press **[MENU]**.
2. Press **[Sound Setting]->[Alert]->[Missed call]** to enter the missed call menu.
3. Press **“Up/Down”** button to select the modes.
There are 2 different modes as Enable and Disable.
4. Press **“SELECT”** to save and exit.

Minute Alert

You can enable or disable the minute alert.

1. Press **[MENU]** in on-hook state.
2. Press **[Sound Setting]-> [Alert]->[Minute Alert]** to enter the minute alert menu.
3. Press **“Up/Down”** button to select the modes.
There are 2 different modes as Enable and Disable.
4. Press **“SELECT”** to save and exit.

Display Setting

Backlighting

You can enable or disable the backlighting.

1. Press **[MENU]**.
2. Press **[Display Setting]->[Backlighting]** to enter the backlighting menu
3. Press **“Up/Down”** button to select the backlighting modes.
There are 4 different backlighting modes as Off, 10s, 20s, 30s.
4. Press **“SELECT”** to save and exit.

Banner

You can edit the banner.

1. Press **[MENU]**.
2. Press **[Display Setting]->[Banner]->[Edit]** to enter the Banner edit menu
3. Select the corresponding input method by press **[English]** and edit the banner.
There are four different input methods as Multitap, Numbers, English and Symbols.
4. Press **“SELECT”** to save and exit.

Contrast

You can adjust the contrast

1. Press **[MENU]**.
2. Press **[Display Setting]->[Contrast]** to enter the contrast adjust menu
3. Press **“Left/Right”** button to adjust the contrast.
4. Press **“SELECT”** to save and exit.

Time Format

You can change the time format.

1. Press **[MENU]** in on-hook state.
2. Press **[Display Setting]->[Time Format]** to enter the time format menu
3. Press **“Up/Down”** button to select the time format.
There are 2 different time formats as AM/PM and 24HR..
4. Press **“SELECT”** to save and exit.

Carrier Info.

You can set the displaying of the carrier information.

1. Press **[MENU]** in on-hook state.
2. Press **[Display Setting]->[Carrier Info.]** to set the menu.
3. Press **“Up/Down”** button to select **[On]** or **[Off]**.
4. Press **“SELECT”** to save it.

Security Setting

Forbidden

Outgoing calls

You can set the forbidden outgoing calls.

1. Press **[MENU]**.
2. Press **[Security Setting]->[Forbidden]->[outgoing calls]** to enter the setting menu.
3. Input the password and press “select”.
4. Press “**Up/Down**” button to select **[On]** or **[Off]**.

Send SMS

You can set the forbidden outgoing SMS.

1. Press **[MENU]**.
2. Press **[Security Setting]->[Forbidden]->[Send SMS]** to enter the setting menu.
3. Input the password and press “select”.
4. Press “**Up/Down**” button to select **[On]** or **[Off]**.

Phone password

You can modify the phone password.

1. Input the old password and press “**SELECT**”, and then input new password.
2. Press “**SELECT**” to save and exit.
3. The default password is “0000”.

PIN Setting

PIN Lock

You can enable or disable the missed call alert.

1. Press **[MENU]**.
2. Press **[Security Setting]->[PIN Setting]->[PIN Lock]** to enter the missed call menu.
3. Press “**Up/Down**” button to select the modes as **[On]** or **[Off]** .
4. Press “**SELECT**” to save it.

PIN Change

You can enable or disable the missed call alert.

1. Press **[MENU]**.
2. Press **[Security Setting]->[PIN Setting]->[PIN Change]** to change the PIN number.

Phone Reset

You can restore the phone set.

1. Press **[MENU]**.
2. Press **[Security Setting]->[Phone Reset]** to enter the reset menu.
3. Input the password and press “select”.
4. Press “**Left/Right**” button to select **[No]** or **[Yes]**.
5. Press “OK” to save and exit, the phone will restart.
6. The default password is “0000”.

Line Speed

You can restore the phone set.

1. Press **[MENU]**.
2. Press **[Security Setting]->[Line Speed]** to set the speed.
3. You can select to set the line speed as 19.2K or 115.2K.

Data/Fax

You can set the state of Date or Fax.

1. Press **[MENU]**.
2. Press **[Security Setting]->[Data/Fax]**.

3. You can select Data/Fax Close, Fax for next call, Fax until Power Off, Date for next call, Date until Power Off.

Time waiting before call

You can set the time waiting before call.

1. Press **[MENU]**.
2. Press **[Security Setting]->[Time waiting before call]**.
3. You can input the time between 2s-10s.
4. Press "Select" to save, that's successful.
5. The default value is 4s.

Supp. Service

Call Waiting

You can set this function to receive another call when answering a call.

1. Press **[MENU]** in off-hook or talking state.
2. Press **[Supp. Services]->[Call Waiting]** to enter the Call Waiting menu
3. Press “**Left/Right**” button to select the call-waiting mode.
There are 3 different call waiting modes as Activate, Deactivate and Cancel.
4. Press “**SELECT**” to save and exit.

Extras

This phone provides some extra functions including Stop Watch, Alarm and Scheduler.

Stop Watch

1. Press **[Extras]->[Stop Watch]** to enter the stop watch menu.
2. Press **[Start]** to start the stopwatch, and then press **[Stop]** to stop the stopwatch. If you want to continue, press **[Start]** again, if you want to reset back to zero, press **[Reset]**

Alarm

1. Press **[Extras]->[Alarm]** to enter the alarm menu.
2. Press **[Enable]** to enable the alarm. You also can set the alarm time by pressing **[Set]**
In Set menu, you can set the alarm time on hour, and minute. Also you can select the alarm-indicating mode as Once, Daily or Weekday.

Scheduler

1. Press **[Extras]->[Scheduler]** to enter the Scheduler menu.
2. Press **“Up/Down”** to select **[View Day]**, **[View Month]**, **[Add Event]** or **[Options]** to check or set the schedule.

Data Services

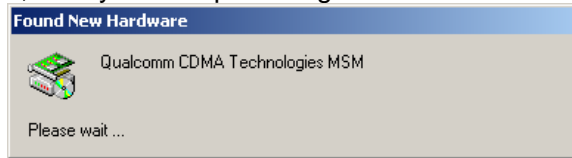
Your phone supports high speed data service. Connect PC to your phone via a specific data cable, and you can surf the Internet where there is network coverage.

Install the driver

At first, connect the phone data interface and the PC interface with the data cable.

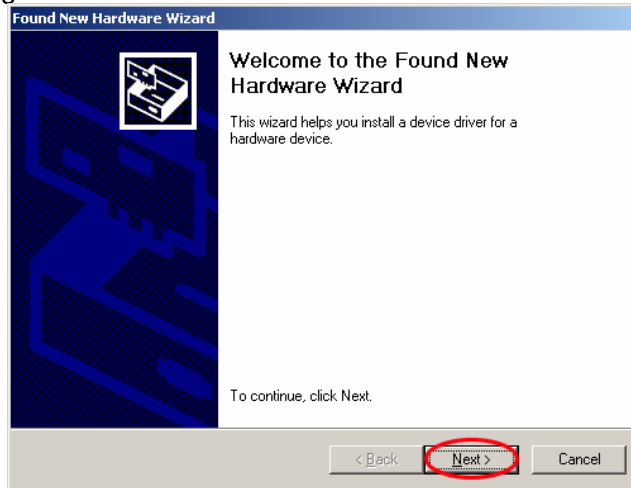
You should set up a new driver before you use the date service. The process like this:

1. Click the software, then your computer begin to found a new hardware. As Figure 1.



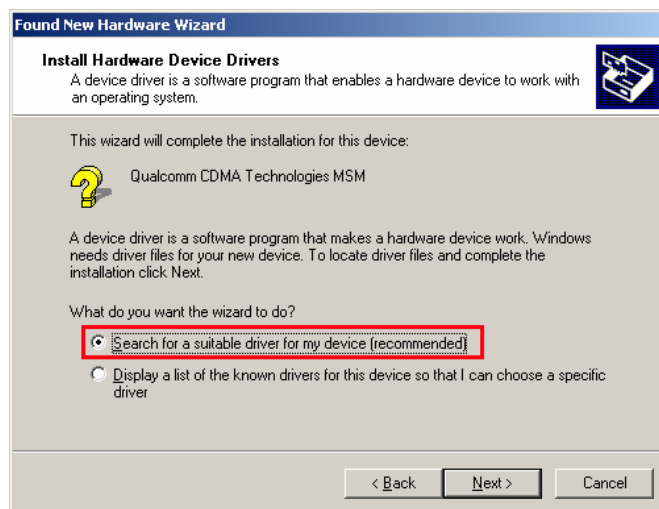
(Figure 1)

2. After a few seconds, you can install a device driver for a hardware device. Click next to continue install as Figure 2.



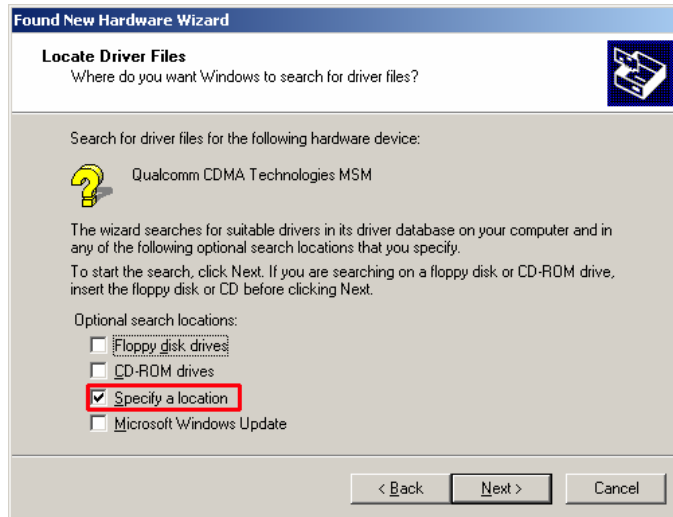
(Figure 2)

3. Windows needs driver files for your new device. You should make the wizard to search for a suitable driver for my device, and then click next. As Figure 3



(Figure 3)

4. Search for driver files for the following hardware device, you should choose: specify a location. Click next to start the search. As Figure 4.



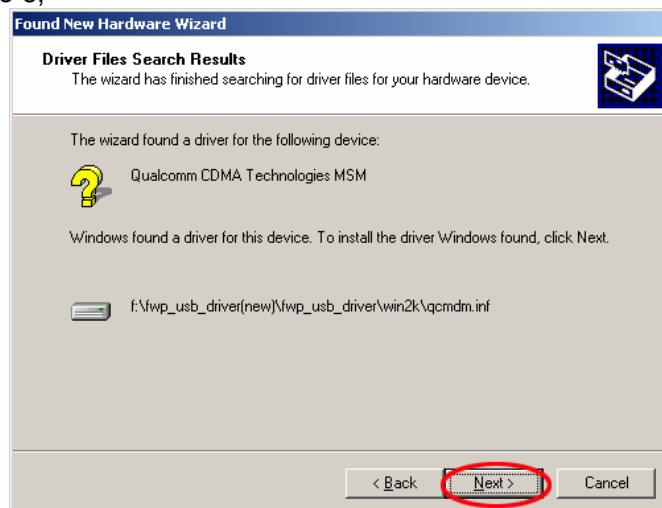
(Figure 4)

5. Click “browse”, search for the file “Qcmdm.inf”, insert the manufacturer’s installation disk into the drive selected, and then click OK. As Figure 5.



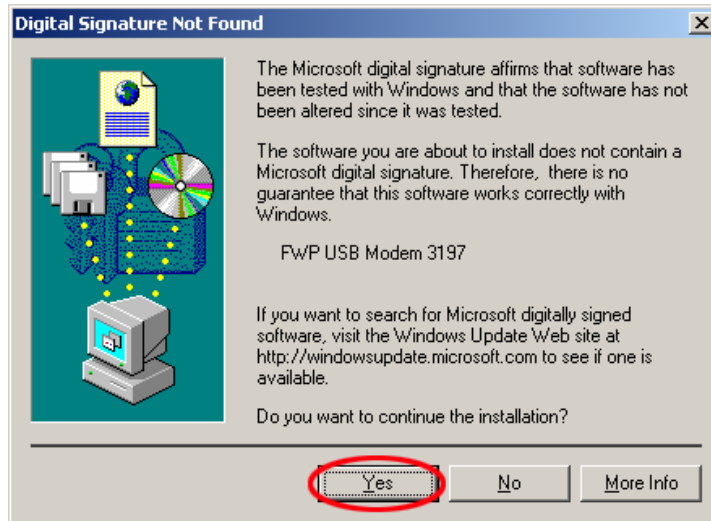
(Figure 5)

6. The windows displays the driver files search results. To install the driver windows found, click next. As Figure 6,



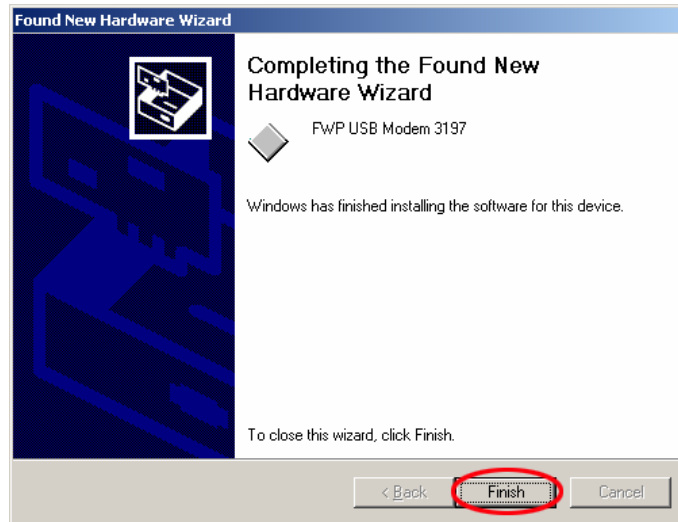
(Figure 6)

7. The software you are about to install does not contain a Microsoft digital signature. Therefore, you need to search for the digital signature, click yes, as Figure 7.



(Figure 7)

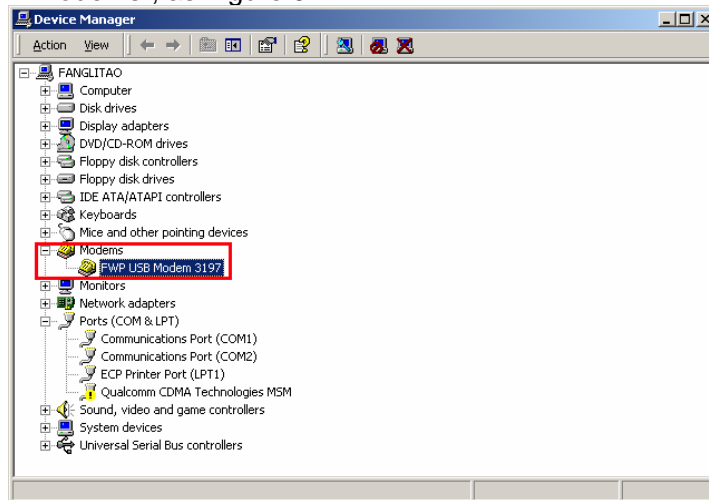
8. At this time, the windows has finished installing the software for this device, click finish to close this wizard, as Figure 8. Now, we need to set and test our new hardware wizard.



(Figure 8)

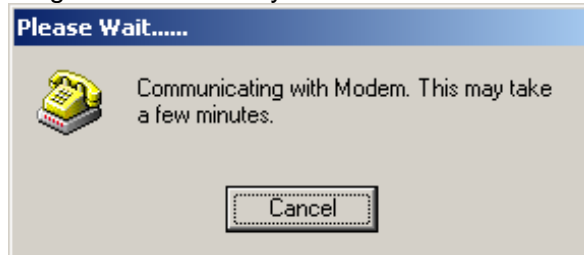
Test

1. Select "my computer", click right key, select and double click "properties→ hardware→ device manager→ modems", as Figure 9.



(Figure 9)

2. Now, communicating with modem may take a few minutes. As Figure 10.



(Figure 10)

3. Select and enter diagnostics to view FWP USB Modem 3197 Properties.

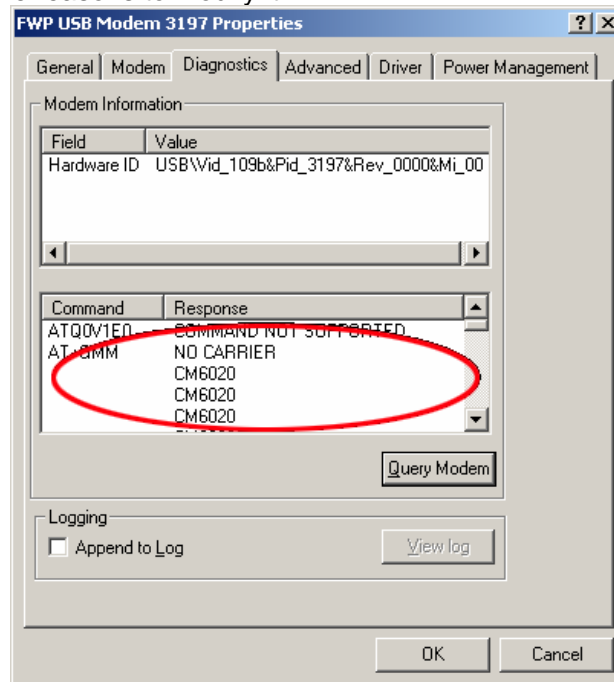
Click “query modem” to know about the modem.

At last the query result as Figure 11 in the red ellipse, that means the modem have succeed installing.

If feedback wrong, the reason may be like this:

- The USB port of the modem may be different from the set USB modem.
- The modem’s power has been turned off.
- There is something wrong with the USB line.
- The USB port of the pc has been worked out.

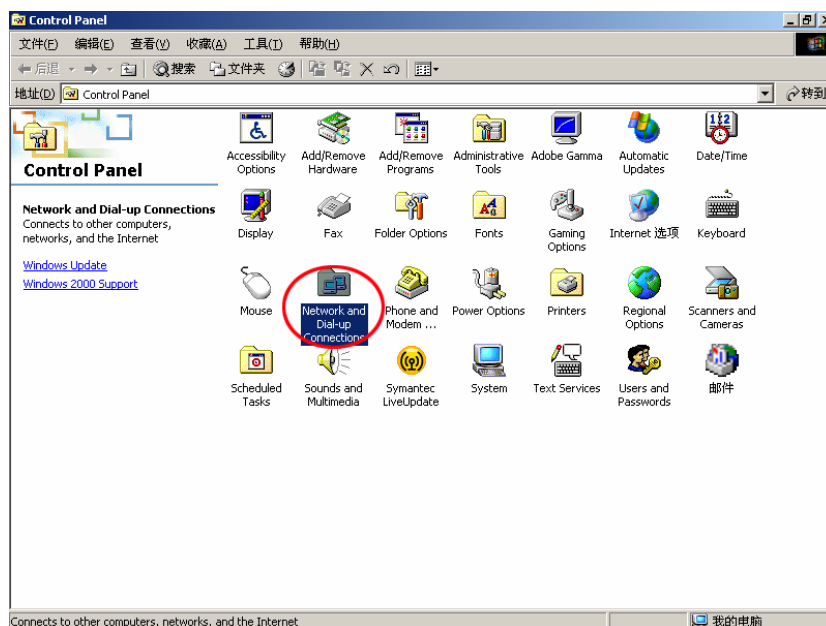
You can examine the reasons to modify it.



(Figure11)

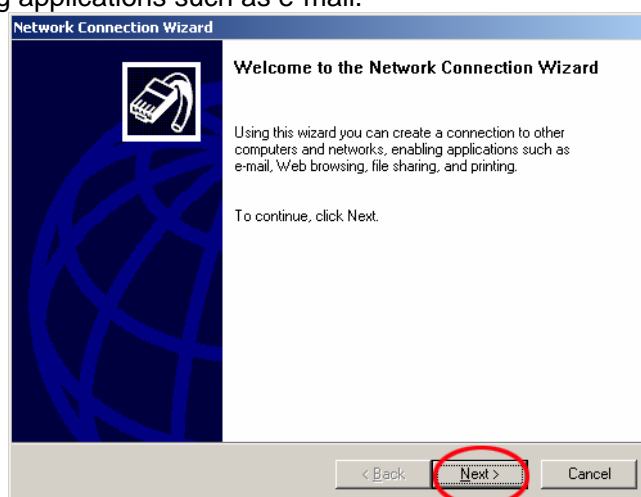
Dialing Connection

1、 Select and enter “start→setting→control panel→network and dial-up connection”, as Figure 12. Start the dialing connection guide.



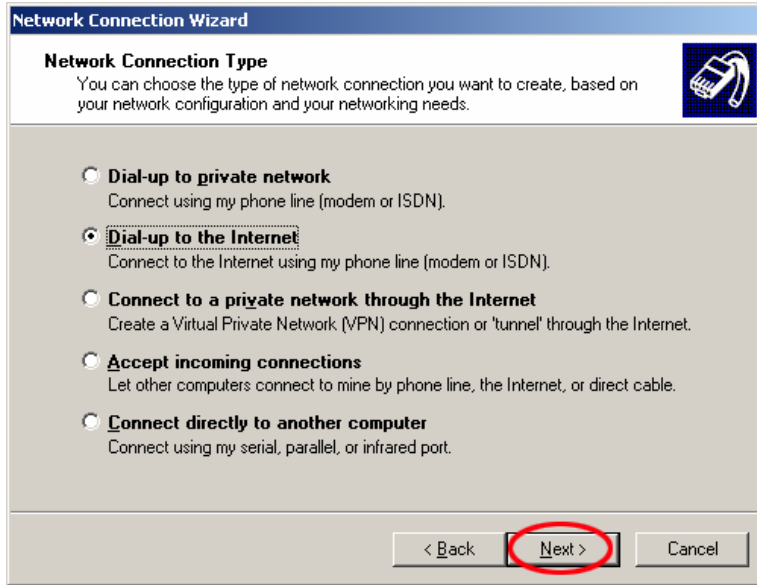
(Figure12)

2、 You can see the dialog as Figure 13 to create a connection to other computers and networks, enabling applications such as e-mail.



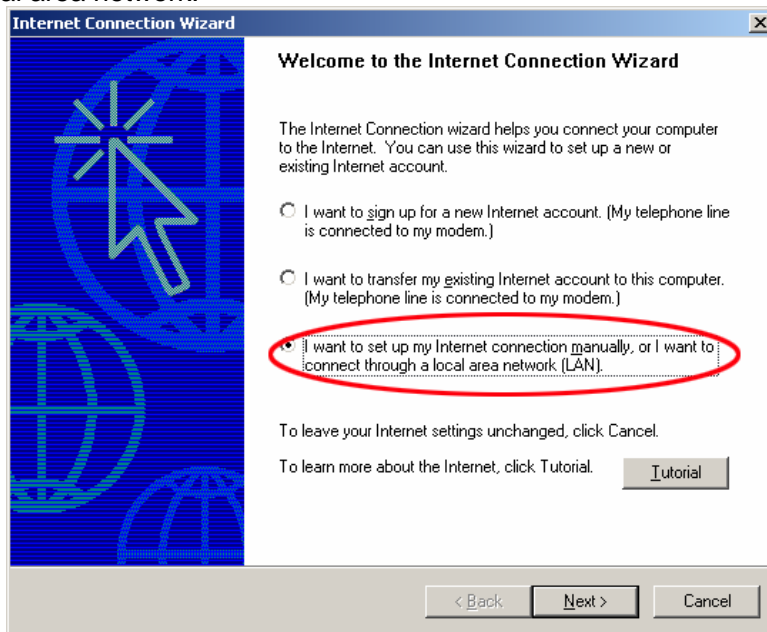
(Figure13)

3、 Choose the type of network connection you want to create, as Figure 14, we should select "dial-up to the internet". Then click next to continue.



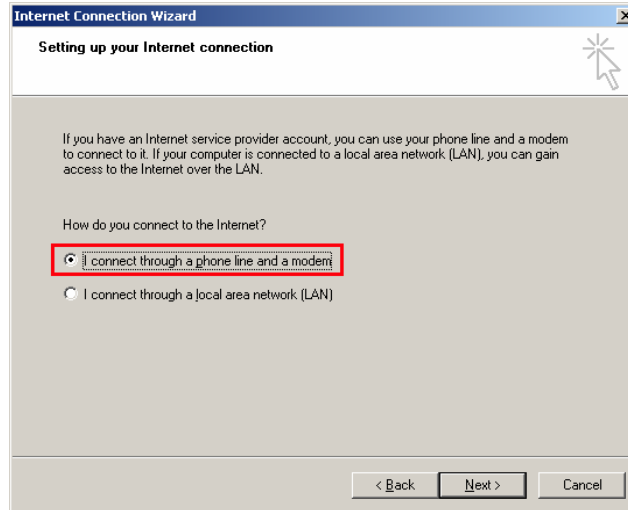
(Figure 14)

4、 The internet connection wizard helps you connect your computer to the internet. You should choose “I want to set up my internet connection manually, or I want to connect through a local area network. ”



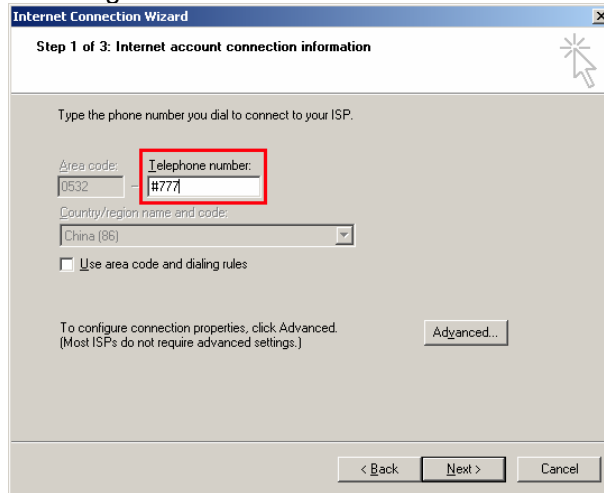
(Figure15)

5、 Select a way to connect to the internet : I connect through a phone line and a modem, as Figure 16, and then click next to continue.



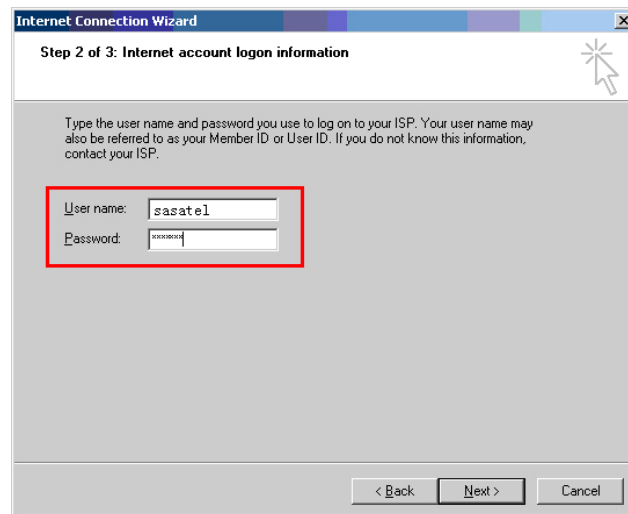
(Figure 16)

6、 You have 3steps to connect the internet. Step 1: type the phone number in the red square, then click next as Figure 17.



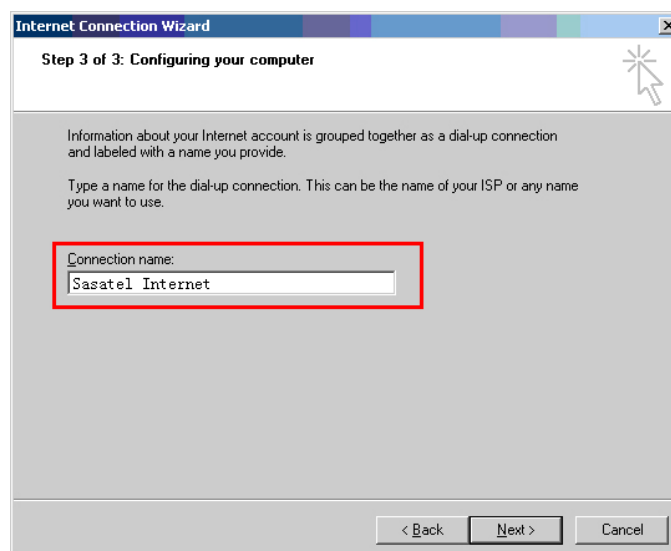
(Figure 17)

Step 2: Insert the user name and password you use to logon information as Figure 18. Click next to continue.



(Figure 18)

Step 3: Make a connection name for the dial-up connection. You can ask the local operator about the name. Click next to continue.



(Figure 19)

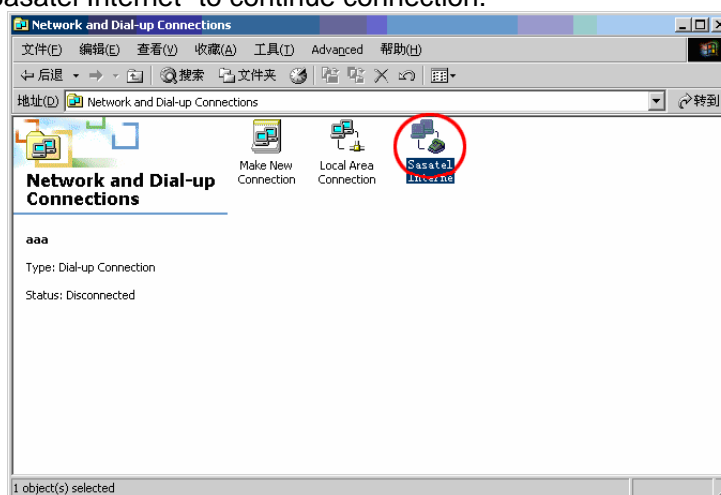
7、 You have successfully completed the internet connection wizard at this time. To close the wizard, click finish.



(Figure 20)

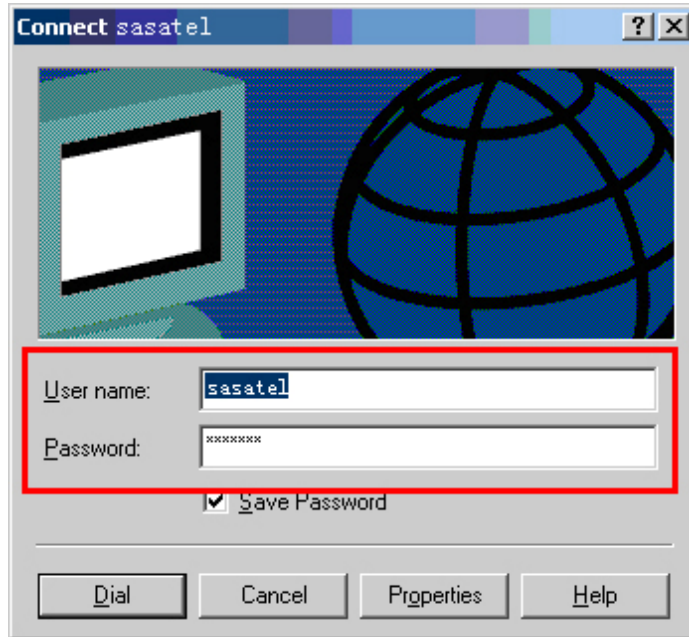
Network and Dial-up connection

1. Select and enter “start→ control panel→network and dial-up connection→ Sasatel Internet”, as Figure 21, Sasatel Internet is the connection name in the forward step. Double click “Sasatel Internet” to continue connection.



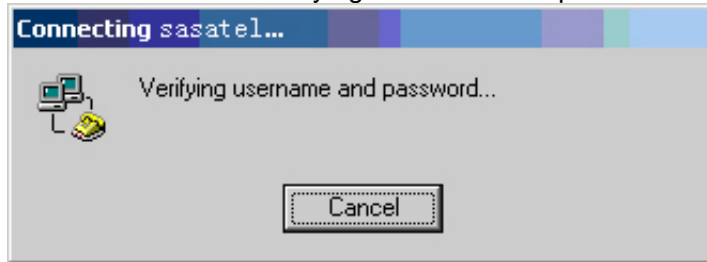
(Figure 21)

2. You should insert the user name and password, user name is sasatel, password is sassatel, you can choose whether save the password or not. Click dial to continue. As Figure 22.



(Figure 22)

3. You need few seconds to wait for verifying username and password. As Figure 23.



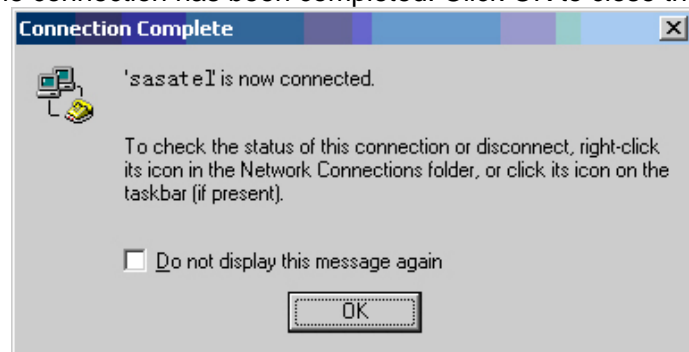
(Figure 23)

4. If it's successful, there is a icon on the screen as Figure 24.



(Figure 24)

5. At this time, the connection has been completed. Click OK to close the dialog.



(Figure 25)

Note:

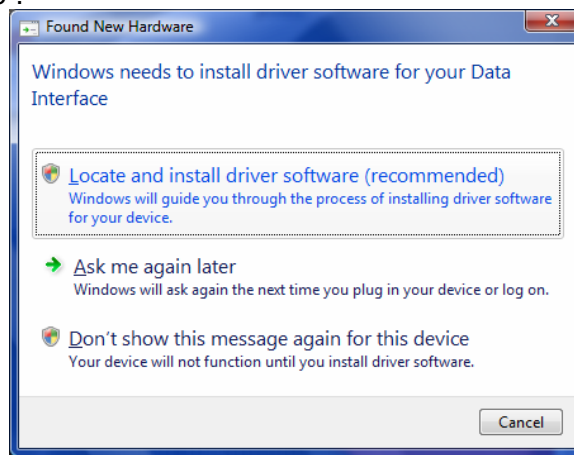
1. The setting of the PC network connection is different according to the different operating systems (The explanation above is valid under Windows 2000).
2. The dialing number, user name and password are different according to the different operators; please refer to the local operator for details. (You should ask the local operator about the material parameter)
3. If a big amount of users are located in one cell, the dialing connection will be affected, please try again.
4. The speed rate of the data transmitting to or from Internet is related to instance of the local network.
5. If the interrupts appear because of the change of the signals, please re-connect. The parameters related to this function have been set in advance. So users needn't change it.
6. If some special instances appear, please refer to the local carrier for details.

Install the driver on the windows VISTA system

At first, connect the phone data interface and the PC interface with the data cable.

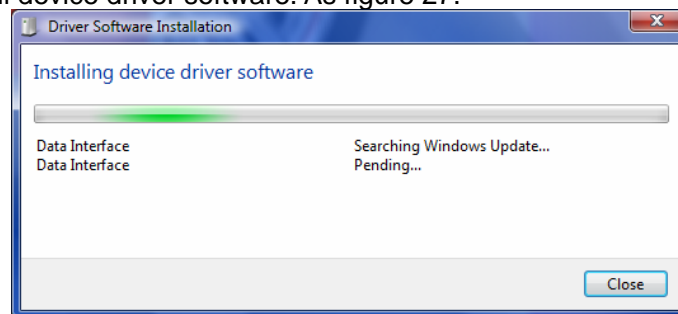
You should set up a new driver before you use the date service. The process like this:

1. Click the software, then your computer give a tip as Figure 26. Click "Locate and install driver software".



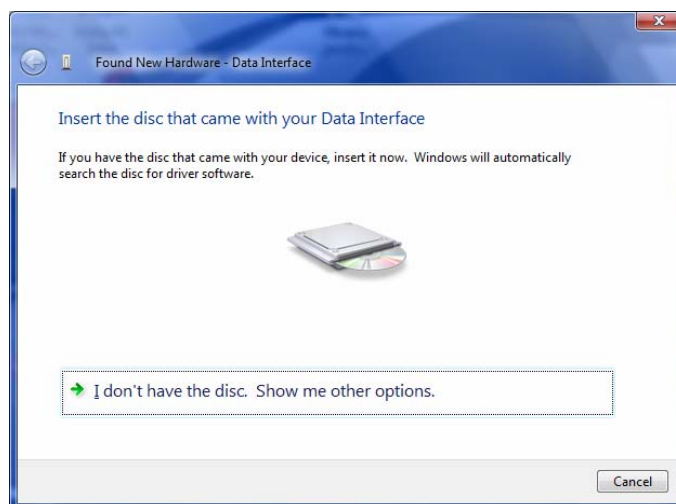
(Figure 26)

2. Begin to install device driver software. As figure 27.



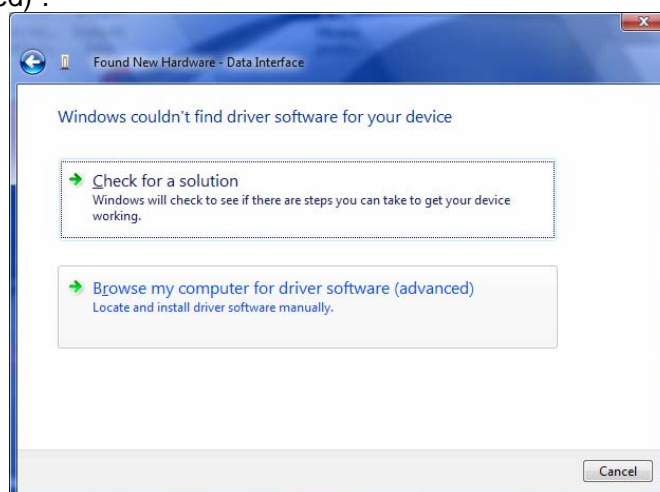
(Figure 27)

3. The system will remind you to "insert the disc that came with your data interface". As figure 28, click "I don't have the disc. Show me other options".



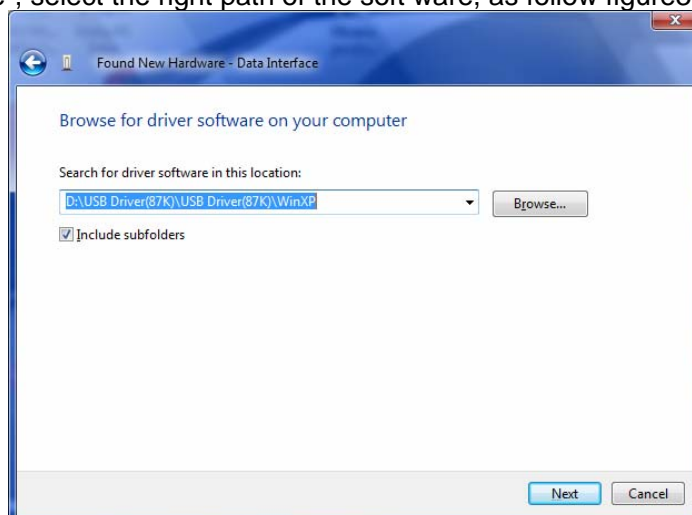
(Figure 28)

4. Then pop the follow dialog box, as figure 29. Click “Browse my computer for driver software(advanced)”.



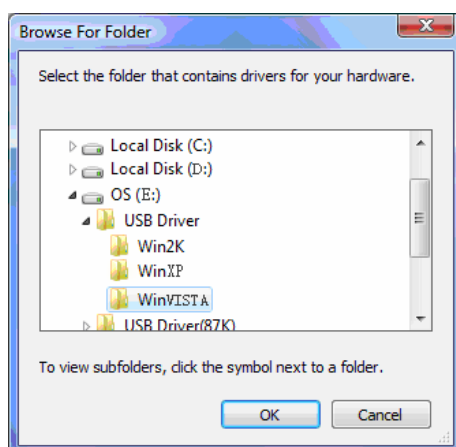
(Figure 29)

5. Click “Browse”, select the right path of the soft ware, as follow figure30.



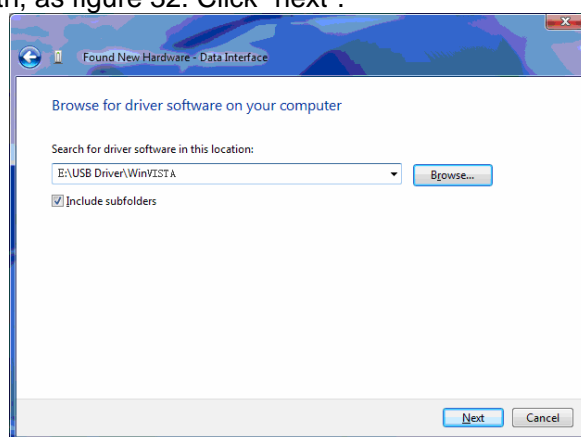
(Figure 30)

6. Click the right path, and click “OK”. As figure 31



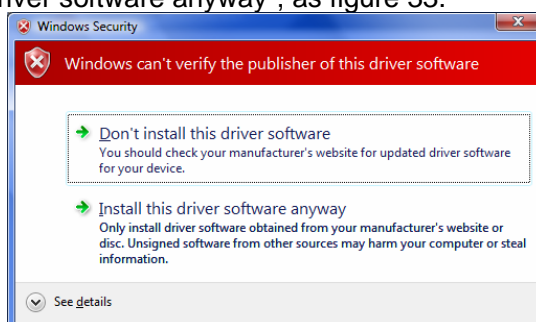
(Figure 31)

7. Affirm the right path, as figure 32. Click "next".



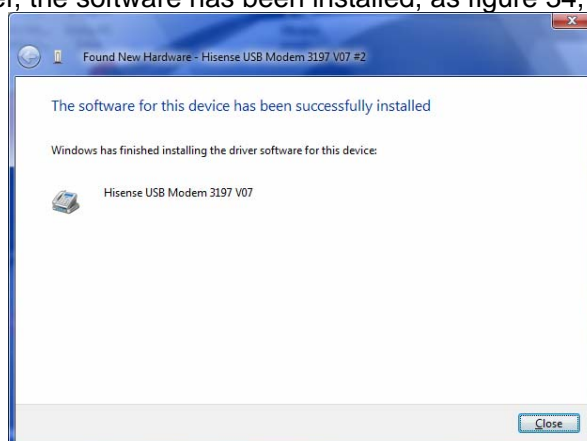
(Figure 32)

8. Select "Install this driver software anyway", as figure 33.



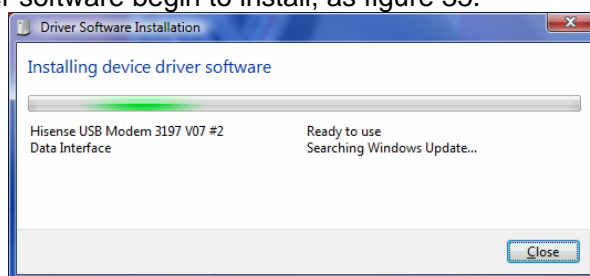
(Figure 33)

9. A few minutes later, the software has been installed, as figure 34, click "close".



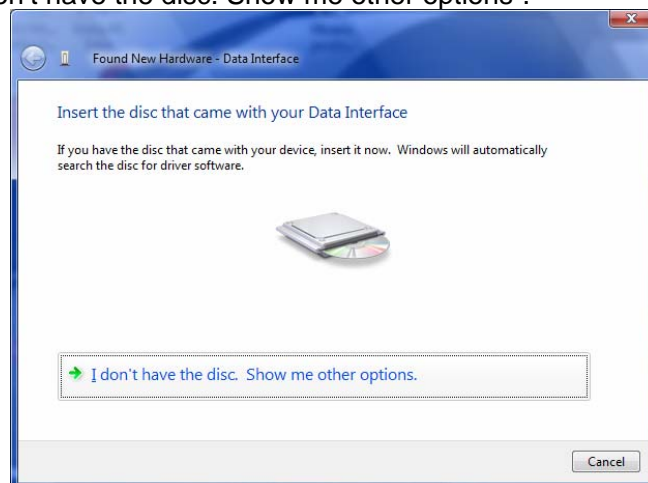
(Figure 34)

10. The device driver software begin to install, as figure 35.



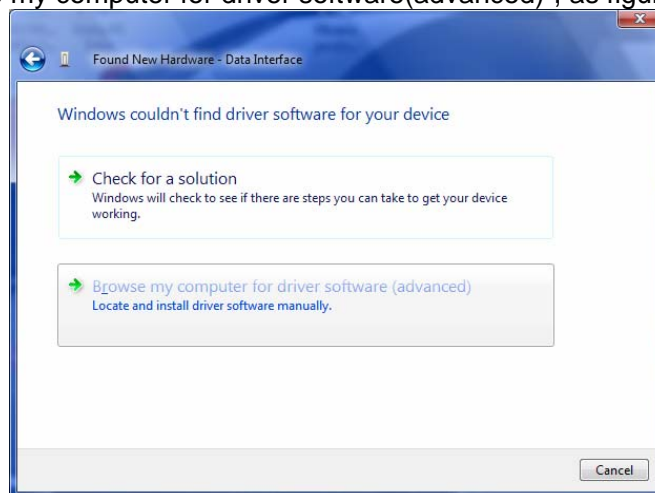
(Figure 35)

11. The system will give a tip “Insert the disc that came with your Data Interface”, as figure 36. then click “I don’t have the disc. Show me other options”.



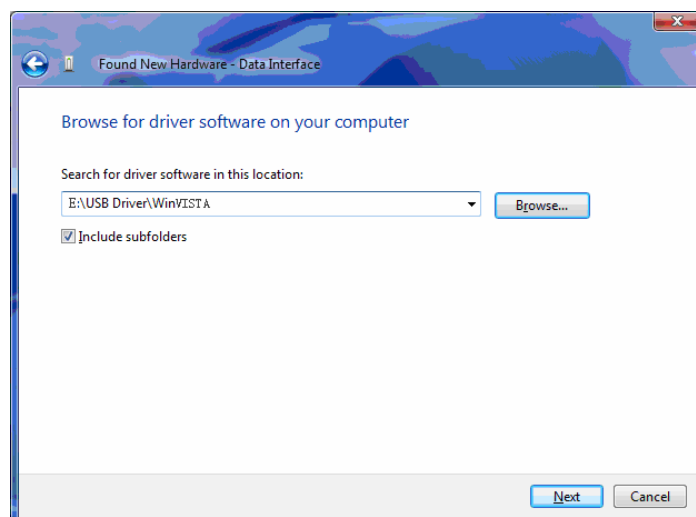
(Figure 36)

12. Click “Browse my computer for driver software(advanced)”, as figure 37.



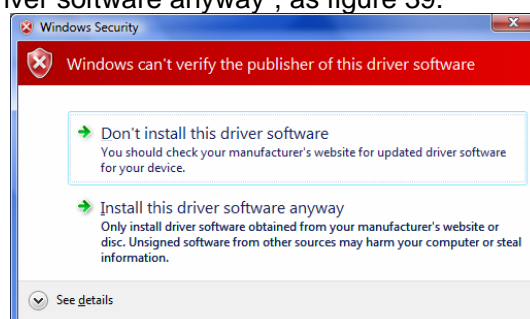
(Figure 37)

13. Click “Browse” and Select the right path, then press “Next”, as figure 38.



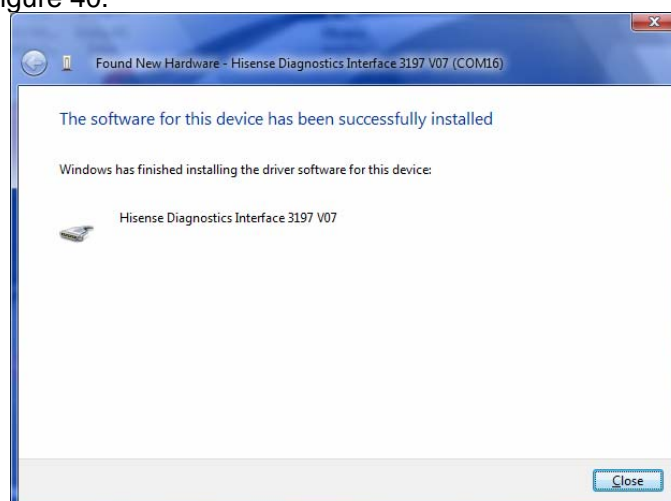
(Figure 38)

14. Click “Install this driver software anyway”, as figure 39.



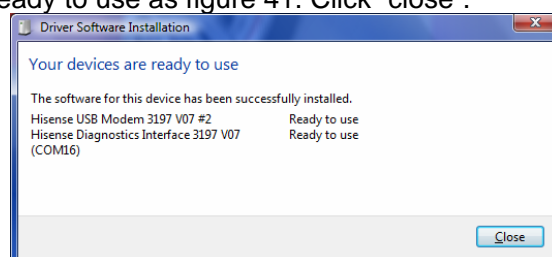
(Figure 39)

15. The system give a tip “the software for this device has been successfully installed”, click “close”, as figure 40.



(Figure 40)

16. The devices are ready to use as figure 41. Click “close”.

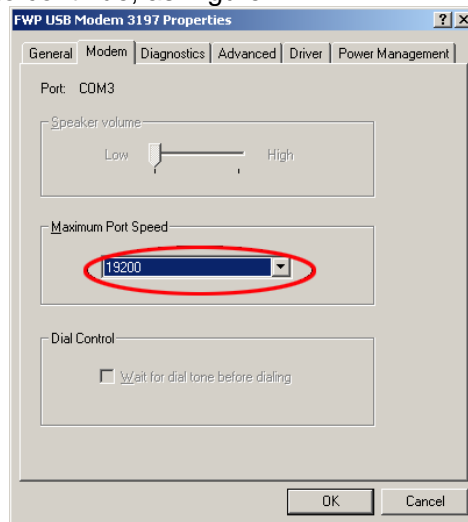


(Figure 41)

Send and Receive Fax

Prior to making or receiving data and fax calls, you must subscribe to data and fax services with your service provider. Your phone must be powered up, and digital service must be available. Your phone must be connected to your PC via the data line.

1. You should choose menu→Security Setting→Line Speed, choose 19.2kps, then select Data/Fax, then select Fax for Next Call or Fax until Power Off.
2. Select and right-click “my computer”, select and double click “properties→ hardware→ device manager→ modems”, double click to view FWP USB Modem 3197 Properties.
3. Click modem about FWP USB Modem 3197 Properties. Set the maximum port speed as 19200. Click OK to continue, as Figure 1.



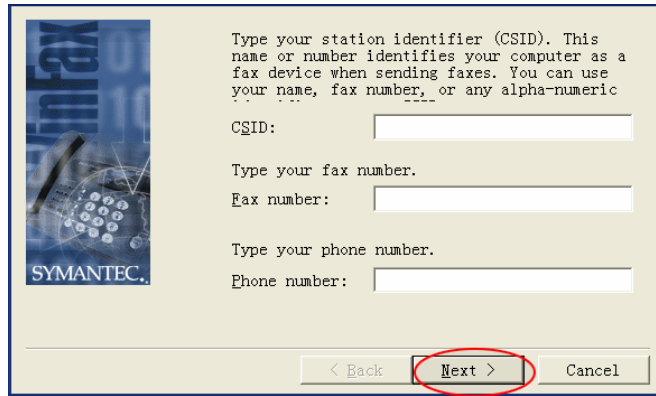
(Figure 1)

4. When you have finished setting Fax Modem, you should set up WinFax PRO 10, you can according to the cue select next, you should fill your name and your computer as Figure 2, then finish it.



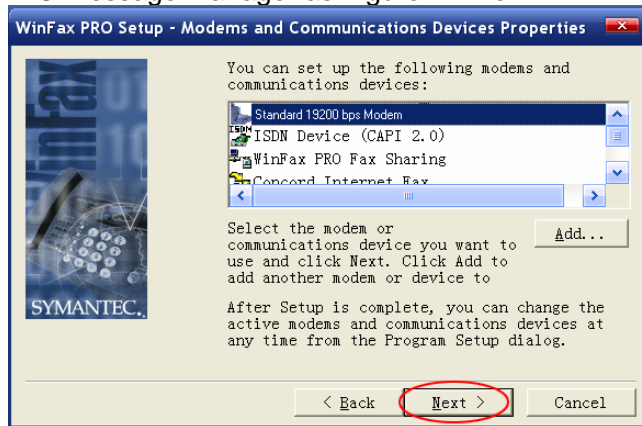
(Figure 2)

5. According to the cue, you could type your CSID or not, then press next. As Figure 3.



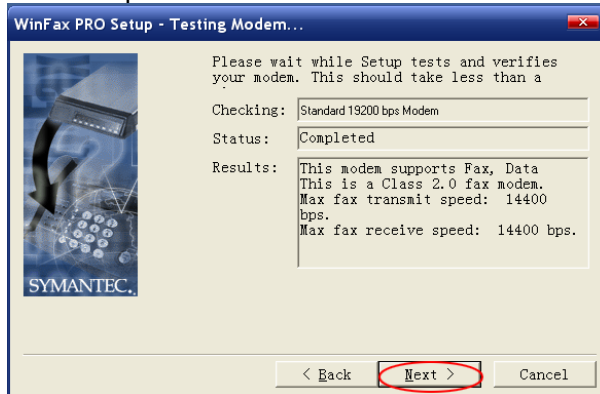
(Figure 3)

- Open winfax PRO message Manager as Figure 4. Then



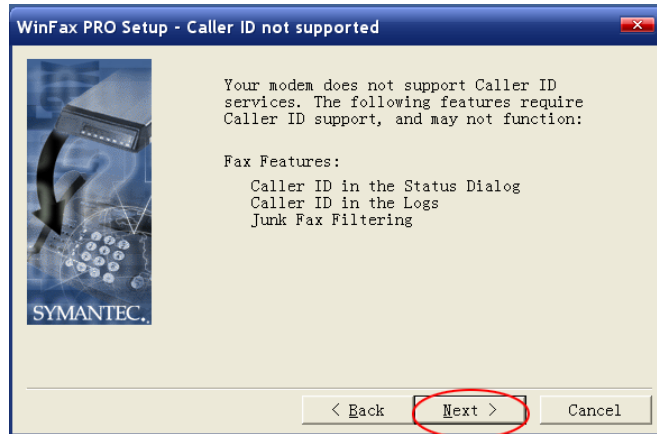
(Figure 4)

- You should wait some minutes while setup testing and verifying your modem. Then it shows as Figure 5. Then press next.



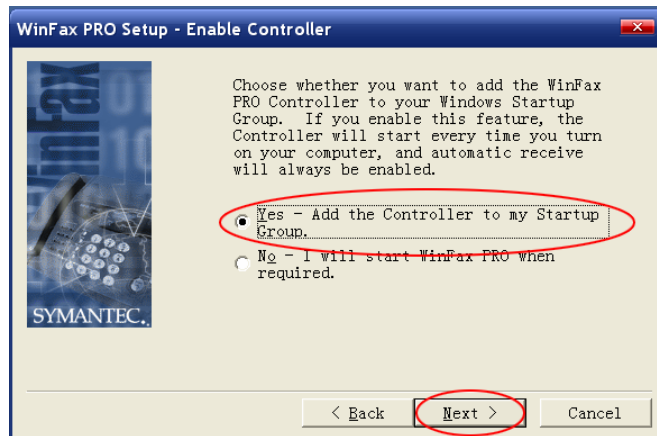
(Figure 5)

- Your modem does not support Caller ID services. The following features require Caller ID support as Figure 6.



(Figure 6)

- 9. You should choose whether you want to add the winfax PRO Controller to your windows Startup Group. Then choose yes, press next as Figure7. Then finish it As Figure 8.



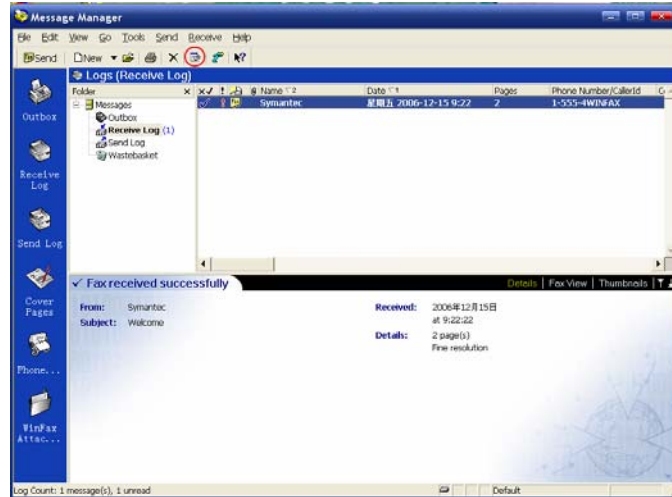
(Figure 7)



(Figure 8)

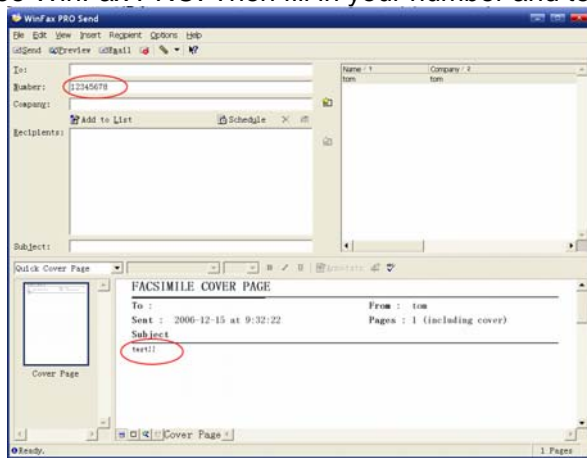


- 10. Then press icon as  . Then select set up as Figure 9.



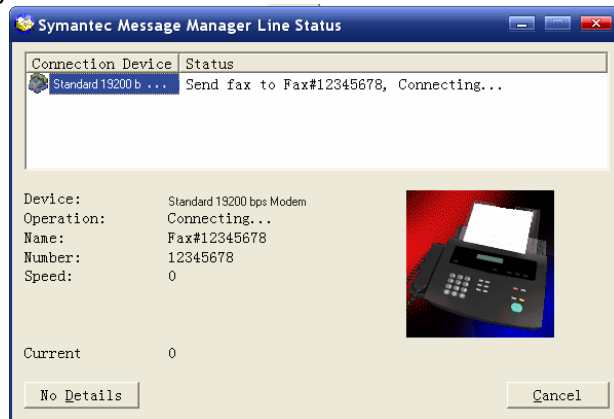
(Figure 9)

11. Then you can see WinFax PRO. Then fill in your number and text!! As Figure10.



(Figure 10)

12. You can see Symantec Message Manager Line Status. Then send fax to your fax number. As Figure 11.



(Figure 11)

Note:

1. Before you can use your phone to send and receive fax calls, you must configure your fax software.
2. Many of the most popular fax programs should support multiple modems connected to a PC or laptop computer, including Symantec WinFax Pro, Smith Micro Software HotFax (version 3.02 or newer), Castelle Fax Press, etc.
3. The detail setting about sending and receiving fax, you can refer to the local operator.
4. If you can't receive the fax normally, please try to set more ring tones receiving fax automatically, when you set the PC set. As Figure 12.



(Figure 12)

Menu Structure

Phone Book	Find	View all		
		Name		
		R-UIM		
		View by Group		
	Add	Add to New	Mobile Phone	
			Home Phone	
			Business Phone	
			Email	
			Address	
		Add to R-UIM		
	Speed dial list			
	My Number			
Duplicate All				
Erase All	All in Phone			
	All Speed Dial			
Memory status				
Recent calls	Missed calls	Delete		
		Send message SMS		
		Save number		
	Incoming calls	Delete		
		Send message SMS		
		Save number		
	Outgoing calls	Delete		
		Send message SMS		
		Save number		
	Calls Info	Last call time	OK	
			Reset	
		Total outgoing time	OK	
			Reset	
		Total incoming time	OK	
		Reset		
	Clear Call History	All	Missed Calls	
			Incoming Calls	
			Outgoing Calls	
			All	
	Messages	Voice mail		
Inbox		Sub_Menus	Next	
			Erase	
	Forward			

			Reply
			Call
			Save Number
			Save To
	Create messages		
	Preformatted messages		
	Draftbox	Sub_Menus	Erase
			Send
			Forward
			Edit
	Outbox	Sub_Menus	Erase
			Send
			Forward
			Edit
	RUIM Status		
	Erase messages	Entire inbox	
		Entire outbox	
		Entire Draftbox	
		Entire RUIM	
		Old Messages	
		Erase multise nd report	
	Message settings	VoiceMail Number	OK Save
		Message alert	None
			Alert once
			Alert & remind
		Set Memory	
		Delivery reporter	Enable
			Disable
	Call back Num	Callback No. set Callback No. edit	
	Memory Status	Inbox Status	
		Outbox Status	
		Draft Status	
		RUIM Status	
	Multisend Report		
Sound setting	Volume	Ringer	
		SMS	
		Voice volume	
		Key beep	
		MIC Volume	
	Ringer Select	Incoming call	
		SMS	

	Alert	Missed call	Enable
			Disable
		Minute alert	Enable
			Disable
Display setting	Backlighting	Off	
		10s	
		20s	
		30s	
	Banner		
	Contrast		
	Time format	AM/PM	
		24HR	
Carrier Info.			
Security settings	Forbidden	Outgoing calls	On
			Off
	Phone password	Send SMS	On
			Off
	PIN Setting	PIN Lock	On
			Off
		PIN Change	
	Phone reset	Enter password	no
			yes
	Line Speed	19.2K	
		115.2K	
	Data/Fax	Data/Fax close	
		Fax for next call	
		Fax until power off	
		Data for next call	
Data until power off			
Time waiting before call			
Supp. service	Call waiting	Activate	
		Deactivate	
		Cancel	
	Stop watch		
Alarm			
Extras	Scheduler	View day	
		View month	
		Add event	
		Options	Set work hours
			Auto delete
Default alarm			

General Information

- **Main Unit**

Item	Description
Tx Frequency	824MHz-849MHz
Rx Frequency	869MHz-894MHz
Channel Bandwidth	1.23MHz
Tx Power	Biggest RF output power: 23 ~ 30 dBm Smallest controlled output power: <-50 dBm
Rx Sensitivity	-104dBm~25dBm
Size	211.96mm*172.60mm*54.26mm
Weight (g)	736g
Operating Temperature	-10-+50℃

- **Battery**

Item	Description
Capacity	3.6V-1500mAh, Ni-MH batteries
Talk duration time	180—250 minutes
Standby duration time	200 Hours
Charging duration time	Fast charge, 5 Hours Slow charge 16 Hours

Note!

1. Network environment, setting of the phone, playing music will reduce the standby duration time.
2. The performance of the battery will change according to the charging status, environment temperature and the current radio wave.
3. Please charge the battery in normal temperature.
4. Suggest you should charge the batteries within 3 months at least.
5. When the batteries are charged for the first time, must select slow charge. Charging 16 hours until it is full, then pull out electrical adapter, at this time only use the batteries to power supply until turning off automatism, then charging 16 hours until it is full, and circulate this cause 3 times.
6. Charging more than 16 hours until it is full, and then pulls out electrical adapter. After that, only use the batteries to supply power, until depleting the power and turning off automatically, then recharging 16 hours until it is full, and circulate this cause 3 times.
7. In normal using condition, please don't leave both the Power Adapter and the batteries installed. The batteries, as a backup power supply, will not cause extra power consumption.
8. In the battery house, the battery bolt is filled in a plastic bag.
9. If you don't use the phone for a long time, please pull out the batteries and keep it well.