

Sasatel Access Manager

For Mac OS X



Sasatel Access Manager

Contents

1. Introduction	- 3 -
2. Installation Guide.....	- 4 -
3. Data Connection	- 7 -
4. Specification	- 12 -
5. FAQs	- 13 -

1. Introduction

Congratulations on your purchase of the advanced and compact Sasatel USB Modem, designed to operate with the latest EVDO CDMA mobile Internet technology.

The User Guide contains important information on the proper use and correct operation of Sasatel USB Modem . Please read carefully to ensure optimal performance and also to prevent any misuse of the product, as any improper usage outside of this User Guide may result in warranty void.

Contents of the gift box

1 Sasatel USB Modem, 1 Quick Guide, 1 USB Extension Cable, Warranty Card, 1 Earpiece

Operating System Requirements

Mac OS X Leopard(10.5) and Snow Leopard(10.6) version

Supports standard USB 1.1 (USB 2.0 Compatible)

10MB free hard disk space or more

2. Installation Guide

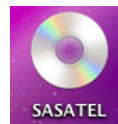
Introduction for installation

The Sasatel USB Modem does not support the automatic installation function on Mac operating system. You need to install it manually following these recommended steps.

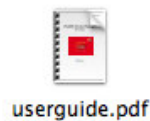
Starting Setup

Insert the Sasatel USB Modem into a USB port on your Mac computer. You may see the Sasatel CD Driver on the Desktop.

1) Double click the Sasatel CD Driver on the Desktop.



2) You may see the following Installation packages.



NOTE:

First of all, you have to install the '**USB Modem Driver**' installer package, later you have to set up manually for data connection, please note page 7.

USB Driver Installation

Double click the 'USB Modem Driver' installer package.



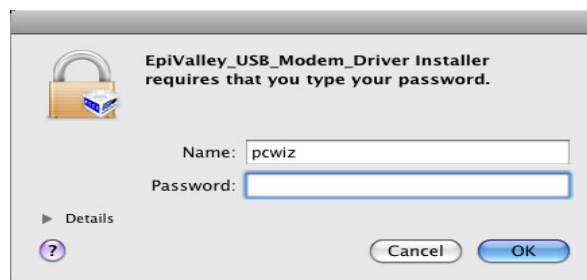
1) Click the **'Install'** button in order to proceed.



2) Click the **'OK'** button.



3) Input your **'Password'** when prompted, and click the **'OK'** button.



4) Click the **'Restart'** button in order to add the system file.



USB Driver Uninstallation Guide

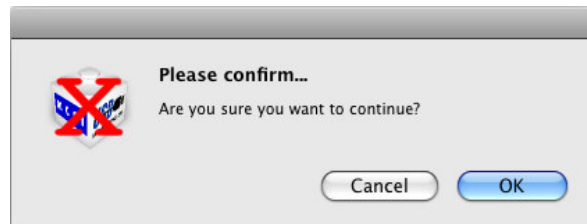
Double click the 'USB Modem Driver' uninstaller package.



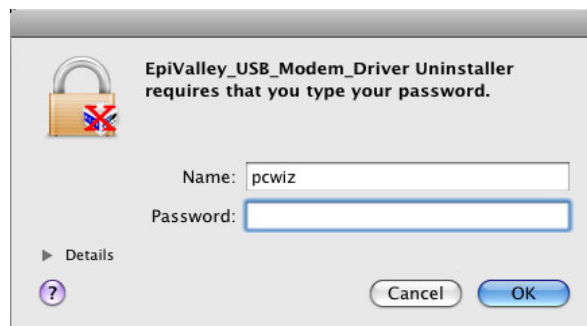
1) Click the '**Uninstall**' button in order to proceed.



2) Click the '**OK**' button.



3) Input your '**Password**' when prompted, and click the '**OK**' button.



4) Click the '**OK**' button
uninstallation.

in order to complete the

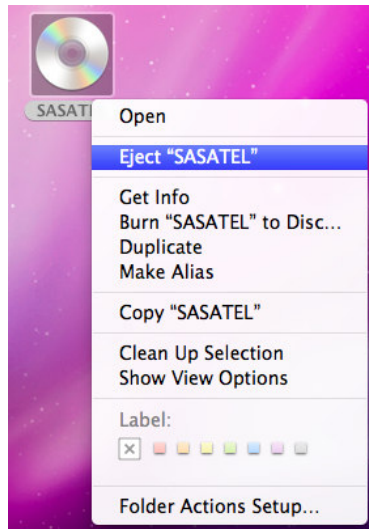


5) You have to **restart** your system after finishing the uninstall.

3. Data Connection

1) The 'Sasatel' CD Driver will appear on the Desktop.

- a. Click the right button of the mouse in order to display the menu.
- b. Click the '**Eject**' item in the Menu, and then the modem port of your Sasatel USB Modem will load.



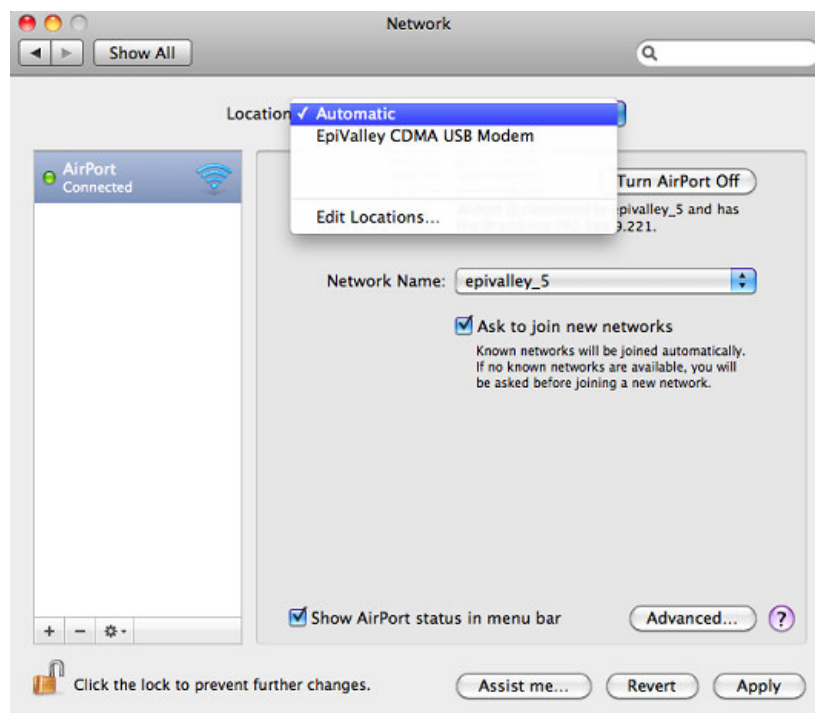
IMPORTANT NOTE: To use the Internet Connection on the Sasatel USB modem, the '**Eject**' menu should be executed in advance.

2) Go to '**System Preferences**' and Click the '**Network**' menu.

Sasatel Access Manager

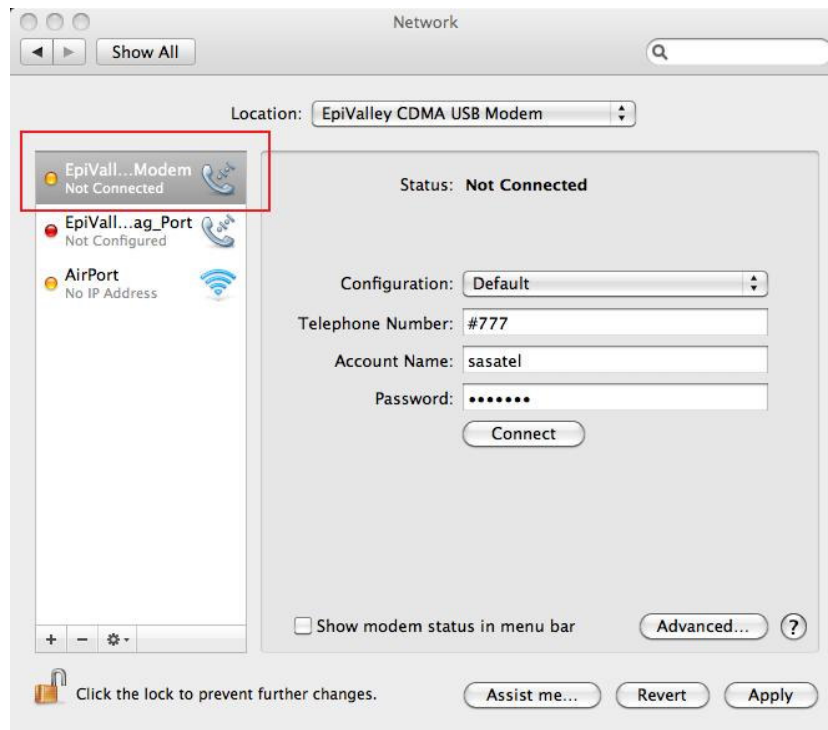


3) Click the 'Location' item, then you see the 'EpiValley CDMA USB Modem' item and choose it.



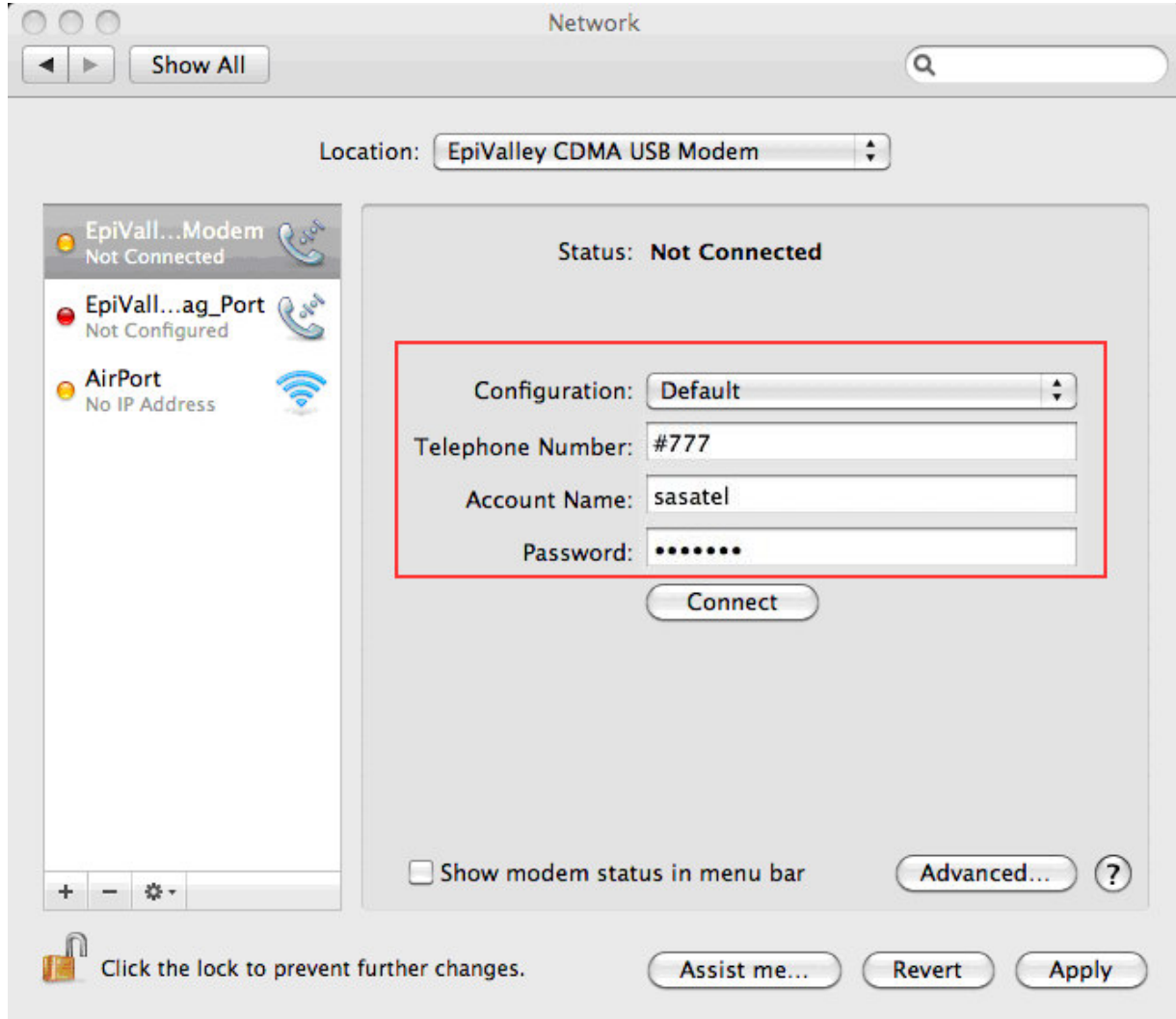
4) Click the 'EpiValley Modem Not Connected' item on the bottom left as shown.

Sasatel Access Manager



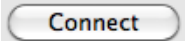
5) Enter Telephone Number, Account Name and Password.

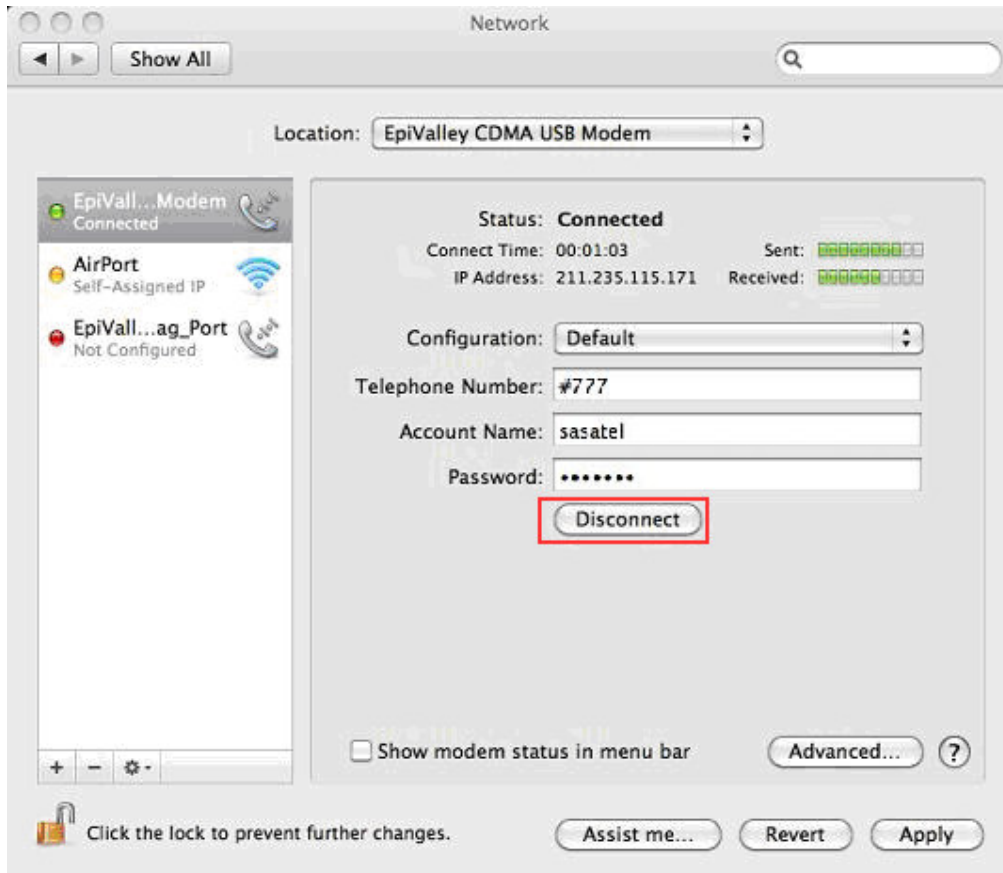
Sasatel Access Manager

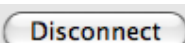


- a. Telephone Number : **#777**
- b. Account Name : **sasatel**
- c. Password : **sasatel**
- d. Finally click on **Apply** to save the changes made.

Sasatel Access Manager

6) Click the () button for internet, then you will see the 'Disconnect' button.



7) Click on () button to disconnect from Sasatel Internet.

4. Specification

Functions	Specifications	
Main Operation Chip	QSC-6085	
CDMA Standard	IS-856-A, TIA/EIA/IS-2000, IS-98E Backwards compatibility with IS-95 A/B	
Frequency Band	Cellular 800 Single Band Support	
	Band Class 0	
	TX: 824 ~ 849 MHz	
	RX: 869 ~ 894 MHz	
Transmit Power	200mW	
Power supply	USB Power	
LEDs	1 Multi-Color LED	
	RSSI Level: Normal (Green) / Weak (Orange) / No service (Red)	
PRL/OTA support	IS-683C	
	Roaming (PRL Support) and Over the Air Service Provisioning (OTASP)	
Antenna	Internal Antenna / Rx Diversity	
Interface Type	USB Connector / USB 1.1 (&2. 0 Compatible / Full Speed)	
T-Flash	Not Supported	
Voice Jack	Supported	
Dimension	W:25.4 D:77 H:10 (mm)	
Weight	Net (19g), Gift box (75g)	
Case Material	PC Plastic	
Operating environment	Operating temperature range	-20C to +60C
	Storage temperature range	-30C to +65C
	Humidity	5% to 95%(non-condensing)

Do not use the Sasatel USB Modem in the following places, or it may be damaged:

- In place with very high or very low temperatures.
- In place with high humidity.
- Directly exposed to the sunlight.

5. FAQs

Q1. What does each LED color stand for?

You can check the signal strength status from LED colors.

Normally it changes from Red → Orange → Green gradually when you plug in the modem.

- Green: Strong signal area
- Orange: Weak signal area
- Red: No service (no signal)

Q2. What shall I do if I cannot access the Internet?

1. Check the network signal strength.
2. Call Sasatel Customer Care to verify that you have credit on your account or bundle
3. Make sure you are using the correct Sasatel profile settings

Q3. LED color is still “RED”! There’s no LED light!

Your Sasatel USB Modem could be faulty. Please contact Sasatel.