

Sasatel Access Manager



Sasatel Access Manager

Contents

1. Introduction	- 3 -
2. Installation Guide	- 4 -
3. UnInstallation Guide.....	- 7 -
4. Launching the Sasatel Access Manager.....	- 9 -
6. Setting up the Internet connection.....	- 10 -
7. Voice.....	- 10 -
8. SMS.....	- 11 -
9. PhoneBook (Address).....	- 11 -
10. Display the Statistic information.....	- 11 -
11. Settings and Information	- 12 -
13. Specification	- 13 -
14. FAQs.....	- 14 -

1. Introduction

Congratulations on your purchase of the advanced and compact Sasatel USB Modem, designed to operate with the latest EVDO CDMA mobile Internet technology.

The User Guide contains important information on the proper use and correct operation of Sasatel USB Modem . Please read carefully to ensure optimal performance and also to prevent any misuse of the product, as any improper usage outside of this User Guide may result in warranty void.

Contents of the gift box

1 Sasatel USB Modem, 1 Quick Guide, 1 USB Extension Cable, Warranty Card, 1 Earpiece

Operating System Requirements

Windows 2000, XP, Vista and Windows 7

Supports standard USB 1.1 (USB 2.0 Compatible)

100MB free hard disk space or more

128MB RAM or more

2. Installation Guide

Introduction for installation

The Sasatel USB Modem supports an automatic installation function of USB drivers and PC-Client tool (Sasatel Access Manager) for Windows® 2000, Windows® XP, Windows® Vista (32bit and 64bit) and Windows® 7.

After plugging the Sasatel USB Modem on your computer, it will mount a CD Driver in your computer. It has an executable file as **SasatelLauncher.exe** program which will check whether your computer needs to install it or not.

If your computer needs to install it, the **SasatelLauncher.exe** program will execute to the **Setup Wizard** program for installation.

Starting Setup

Insert the Sasatel USB Modem into a USB port on your computer. To run the installation function, please wait for about 1 minute for loading the installation file from the Sasatel USB Modem.



- **SasatelLauncher.exe** program in the CD Driver of 'Sasatel' could be disabled on some computers due to local IT policies. Contact your system administrator in this case.
- If the AutoRun feature on Windows is disabled on your computer, you can install it manually. Follow the steps below for the first time installation.
 - 1) Open Windows Explorer or My Computer, and the CD Driver '**Sasatel**' appears.
 - 2) Click CD Driver '**Sasatel**'.
 - 3) Execute '**SasatelLauncher.exe**' program to start the installation.

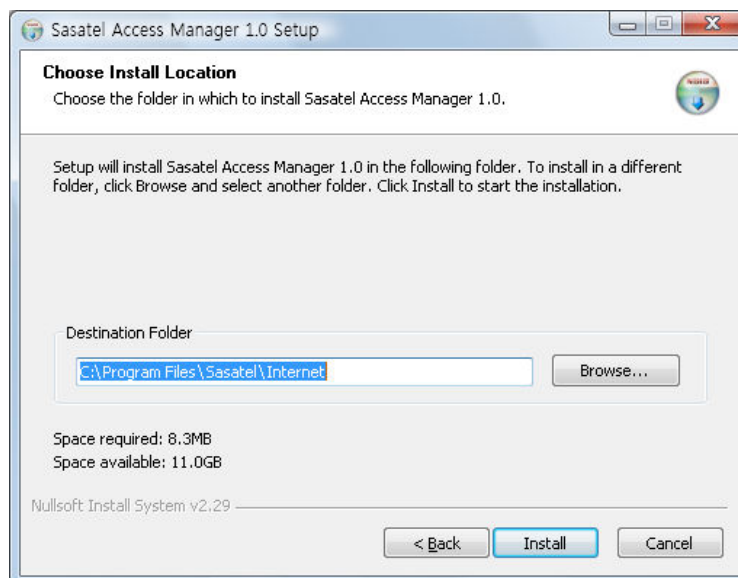
Starting Installation

After the 'Initializing...' display in the Starting Setup, 'Welcome to the Sasatel Access Manager Setup Wizard' will appear.

- 1) Click 'Next' button in order to proceed.

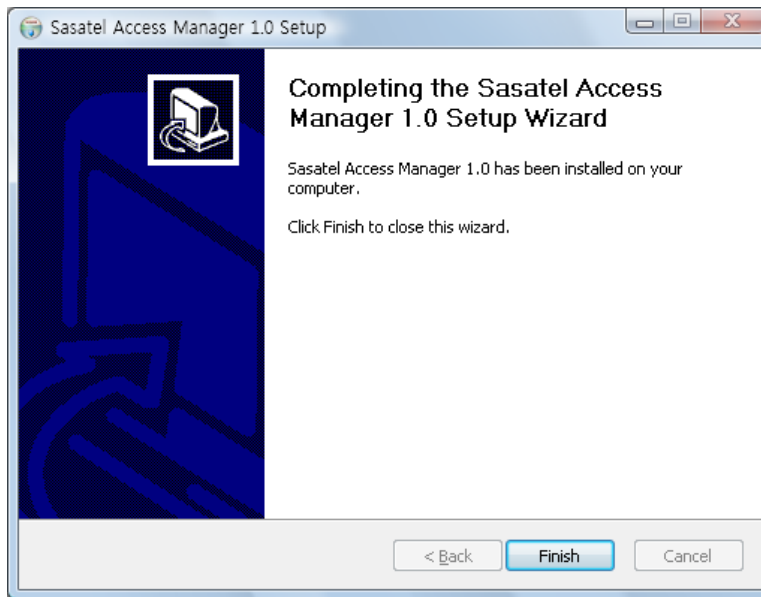


- 2) Default Installation directory is 'C:\Program Files\Sasatel\Internet'. You can change it to the desired directory location by Pressing the 'Browse...' button. It is recommendable to install the **Default installation directory** in the given folder.



Click 'Install' button to continue the installation.

3) When the installation is completed, click '**Finish**'.



USB Driver Installation

After installing the driver, the Sasatel USB Modem will be automatically recognized as a modem, not a CD Driver. Once the installation process is completed "**Your new hardware is installed and ready to use**" will be displayed.



IMPORTANT NOTE

- **DO NOT** unplug the Sasatel USB Modem during the USB driver installation.
- **DO NOT** cancel the Access Manager launched automatically during the USB driver installation.
- **DO NOT** restart the computer during the USB driver installation.

※ If the USB driver is not properly installed, Re-run the installation process after completing the steps mentioned in the "3. Uninstalling Guide".

3. Un-installation Guide

Please note that the Sasatel Access Manager cannot be **Completely** uninstalled while it is running either on the desktop or in the system tray.

IMPORTANT NOTE

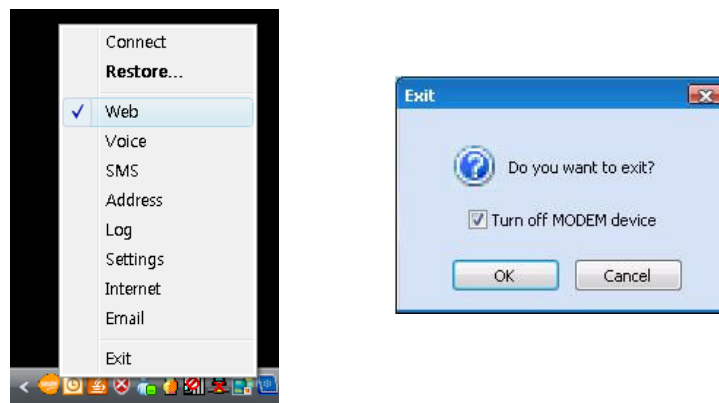
- Please **UNPLUG** your Sasatel USB Modem before uninstalling.
- Before uninstalling the Access Manager, please **CLOSE** the Access Manager on the desktop and also from the system tray.

(You will see a 'Sasatel Access Manager' icon at the bottom right of your desktop screen.)

Uninstall Step 1

Exit the Sasatel Access Manager from the system tray as shown below:

Select '**Exit**' on Tray Menu → Click '**OK**' button.



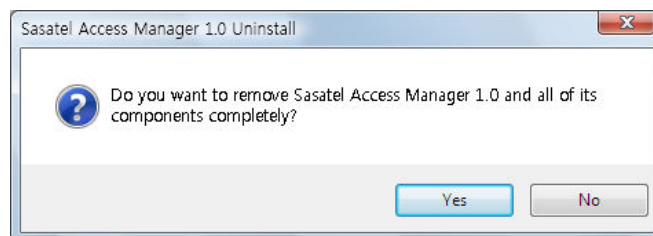
Uninstall Step 2

Program can be uninstalled by accessing the Start menu.

Open START menu → All Programs → Sasatel → Internet → Click **Uninstall**

Or

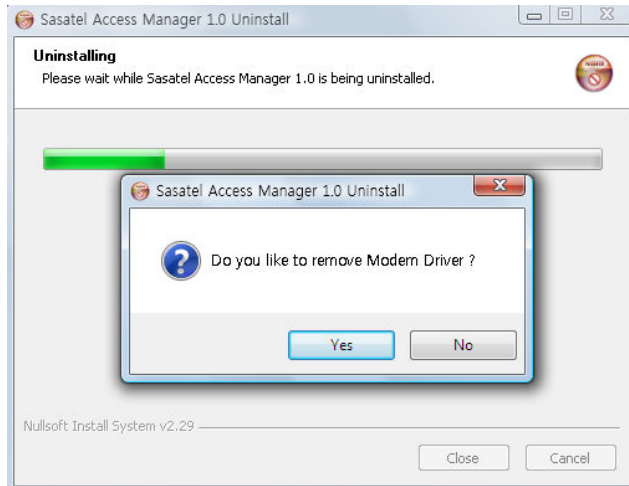
Open START menu → Control Panel → Add Remove Programs → Change or Remove Programs → Click **Sasatel Access Manager**.



Click **YES** to Continue

Uninstall Step 3

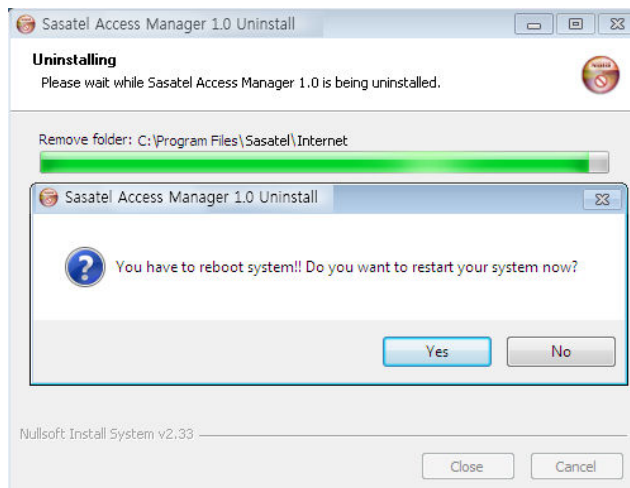
Click **YES** if you want to remove the entire Sasatel Access manager along with the Sasatel USB Modem Drivers.
Click **NO** to just remove the Sasatel Access Manager application.



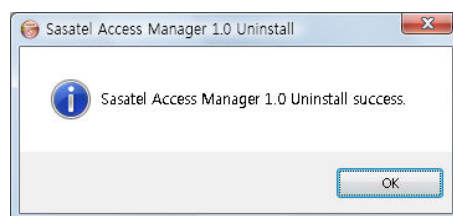
- Remember Uninstalling the Modem drivers requires **restarting** the computer.

Uninstall Step 4

Click **YES** to complete, and your computer will restart.




If you did not unplug the Sasatel USB Modem during the uninstall process, the below window will pop-up. Click **OK** to complete and manually **restart** your computer.










4. Launching the Sasatel Access Manager

Running Sasatel Access Manager

Plug the Sasatel USB Modem in a USB port, and Sasatel Access Manager will run automatically on Windows OS. Otherwise double click 'Sasatel Internet' () icon in your desktop or select 'Start → All Program → Sasatel → Internet'.




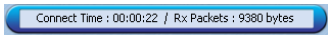




After initialization, the main window of application will be displayed on the screen as shown below. The main window has five Menus with specific functions.

Menu Item	Description
	Display for the internet connection manager.
	Display for Voice Call.
	Display for SMS.
	Display for PhoneBook
	Display for the log statistics.
	Set General, Network, Information.
	Open the e-mail client.

Status information

The below table lists the status information on the Access Manager.

Status Item	Description
Status bar	The status bar display for date/time, network signal, SMS, Voice and packet information. 
Network signal Information	Network information  : Indicates the network signal strength.  : Indicates the EVDO network identification.
Internet Connection	When connected, you can check connection time and received packet size, .  : Current time and total Rx packet.
Tray ICON	By pressing the Minimize button, the Sasatel Access Manager will disappear and can be seen as the Tray icons:  : Normal Status /  : Disconnected Status

6. Setting up the Internet connection



Click '**Web**' icon.


Editing Profile

Sasatel Internet Profile is already preprogrammed and ready to use. If you need to recreate this profile follow these instructions:

When installing the Sasatel USB Modem the Internet connection profile is created. To edit the profile information follow the steps below.

- 1) Click 'Web' icon to display the Internet connection profile details.
- 2) Select the Internet connection profile displayed.
- 3) Click '**Edit**'.
- 4) Enter the Internet connection number '#777'.
- 5) Enter the user name as '**sasatel**' and password as '**sasatel**'.
- 6) Click '**OK**' button in order to save.

Internet Connection on 'Web'

Click the Connect button () flashing on the Web screen to establish the connection.



There is a default profile to connect to the Sasatel (<http://www.sasatel.co.tz>) web page. Click the below logo at the bottom right of the Sasatel Access Manager.

7. Voice



Click '**Voice**' Icon.

You can see a dial button and a history list view for Call Logs, entering the destination phone number using the keypad or by selecting a number on the call list, then click "**Send**" to make the call. To finish the conversation, click the "**End**" button.

During the call , you can control the volume level by using the volume bar which will be displayed after the call is connected.

8. SMS



Click '**SMS**' Icon.

Write a message into the edit box, and insert a destination number to the "**To:**" edit field and click "**Add**" button to update the number into the calling list. You can use a "Search", "Log", or "Add" button to add a number or delete using the "Del" button, and there are 3 priority options as "Normal", "Urgent", and "Emergency". You may send the message by clicking the "**Send**" button.

9. PhoneBook (Address)



Click '**Address**' Icon.

To search an entry in the list, select a field (Name, All no, Mobile, Group, Address, Home, Office, FAX, Email, or Comments) on the top left tab of the list, enter a name or number, and then, click "**Search**". Then the entries, containing the name or number, are listed.

- You can make a new group; the maximum contacts per group are 20.
- You may right click on the mouse as shown on the left diagram. When you click it, a small menu will pop up. There are 4-options as Add-Edit-Delete-SMS
- If you want to move or copy your items between each group, you can use drag-and-drop or use a small menu such as shown in the right figure.

10. Display the Statistic information



Click '**Log**' Icon.

The 'Internet Log' feature provides information on the Internet usages such as Date, Duration, Rx, Tx total bytes.

DISCLAIMER NOTE

This Internet Log feature provided with this utility gives only approximate usage of Data and Time and is strictly indicative to facilitate customers to understand approximate consumption, which would vary from actual figures due to various external factors. These details are only for your indication and not used for billing purpose which shall be purely as per the Network reports.

11. Settings and Information



Click 'Settings' Icon

General Settings

Select 'Settings' Icon → Click 'General' tab.

Items	Description
Auto termination when Windows go to power saving mode	The Sasatel Access Manager will exit automatically when your computer is switched to power saving mode.
Auto execution when Windows startup	The Sasatel Access Manager will start automatically when the Windows is started .
Execute the Access Manager on Background	The Sasatel Access Manager is minimized on the Tray bar and runs on the background when you click "Close".

Network Settings

Select 'Settings' Icon → Click 'Network' tab.

You can change the mode of preference as 'Hybrid Mode', '1xOnly' and 'EVDO Only'.

Preference Mode	Description
Hybrid mode	The Sasatel USB Modem will operate in dual mode with EVDO and 1x periodically. This is the default and preferred setting for Sasatel USB modem.
1xOnly	The Sasatel USB Modem will operate only in CDMA1x mode without EVDO. You may use the 1xOnly mode in an area without EVDO coverage.
EVDO Only	The Sasatel USB Modem will operate only in EVDO mode without CDMA1x. If you do not want to use the CDMA1x service, you can use this mode

Information

Select 'Settings' Icon → Click 'Information' tab.

The information tab displays the following items:

- 1) Application Information Version.
- 2) PRL ID information
- 3) Wireless Modem information as Model name, S/W version, H/W version, MEID and ESN.

13. Specification

Functions	Specifications	
Main Operation Chip	QSC-6085	
CDMA Standard	IS-856-A, TIA/EIA/IS-2000, IS-98E Backwards compatibility with IS-95 A/B	
Frequency Band	Cellular 800 Single Band Support	
	Band Class 0	
	TX: 824 ~ 849 MHz	
	RX: 869 ~ 894 MHz	
Transmit Power	200mW	
Power supply	USB Power	
LEDs	1 Multi-Color LED RSSI Level: Normal (Green) / Weak (Orange) / No service (Red)	
PRL/OTA support	IS-683C Roaming (PRL Support) and Over the Air Service Provisioning (OTASP)	
Antenna	Internal Antenna / Rx Diversity	
Interface Type	USB Connector / USB 1.1 (&2. 0 Compatible / Full Speed)	
T-Flash	Not Supported	
Voice Jack	Supported	
Dimension	W:25.4 D:77 H:10 (mm)	
Weight	Net (19g), Gift box (75g)	
Case Material	PC Plastic	
Operating environment	Operating temperature range	-20C to +60C
	Storage temperature range	-30C to +65C
	Humidity	5% to 95%(non-condensing)

Do not use the Sasatel USB Modem in the following places, as it may be damaged:

- In place with very high or very low temperatures.
- In place with high humidity.
- Directly exposed to the sunlight.

14. FAQs

Q1. What does each LED color stand for?

You can check the signal strength status from LED colors.

Normally it changes from Red → Orange → Green gradually when you plug in the modem.

- Green: Strong signal area
- Orange: Weak signal area
- Red: No service (no signal)

Q2. What shall I do if I cannot access the Internet?

1. Check the network signal strength.
2. Dial *144# from the modem and verify that you credit on your account or bundle.
3. Make sure you are using the correct Sasatel profile settings

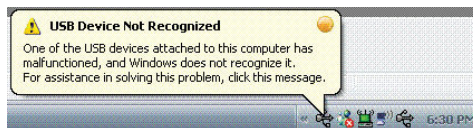
Q3. Despite of “Green” LED, the Sasatel Access Manager is still not connected!

Firstly, unplug the Sasatel USB Modem.

Secondly, follow the step “**3. Uninstallation Guide**” on page 7 and restart your computer.

Lastly, plug the Sasatel USB Modem again, and follow step “**2. Installation Guide**” on page 4.

Q4. The software is not running automatically and it shows the screen below.



Please follow the steps mentioned the Q3 step again. If the same message appears, contact Sasatel.

Q5. LED color is still “RED”! There’s no LED light!

Your Sasatel USB Modem could be faulty. Please contact Sasatel..

Q6. If you need to re-install the Sasatel Access Manager with the USB Modem driver!

Please follow the steps mentioned in the answers to the Q3.

Q7. The Sasatel auto-installation program does not appear automatically.

The AutoRun feature in Windows might be disabled under the local IT policies of Windows.

In this case, you need to install the PC-Dialer manually, following the steps mentioned at “**Starting Setup**” on Page 4.

Q8. There are no signal bars on the Sasatel Access Manager and “No service” message is displayed, or the LED of the Sasatel USB Modem is orange or red color.

The Sasatel network signal might be too weak in your area, Contact Sasatel.